



RALLY SEMINAR
17/01/2020 – PRAGUE

RALLY REGULATIONS / SCRUTINEERING

A WORLD IN MOTION

FEDERATION
INTERNATIONALE
DE L'AUTOMOBILE

FIA.COM



Jérôme TOQUET

Head of Technical Matters, Rallies
FIA Technical Department



FIA

Karmo UUSMAA

FIA Technical Delegate for WRC/ERC/MERC





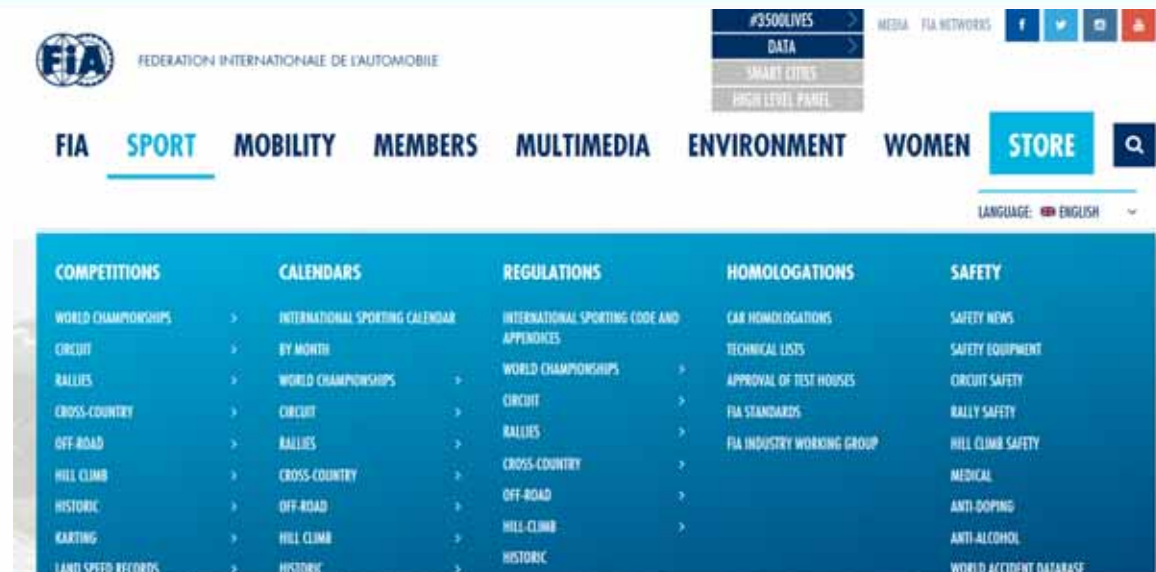
RALLY REGULATIONS:

- 1) GENERAL INFORMATION
- 2) ELLIGIBLE CARS
- 3) SAFETY EQUIPMENT RALLY CARS
- 4) SAFETY EQUIPMENT / CREW
- 5) TYRES
- 6) REFUELING
- 7) QUESTIONS



<http://www.fia.com/>

...under section **SPORT**



<http://www.fia.com/safety-news>



➤ *What is a technical list?*

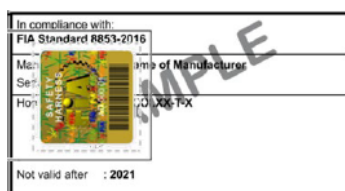
- ❖ An official FIA document published on www.fia.com twice a month
- ❖ 1 technical list per FIA-standard
- ❖ Contains all FIA-approved models

➤ *What information is included?*

- ❖ Valid Labels
- ❖ Manufacturer name
- ❖ Model name
- ❖ Homologation number (if applicable)
- ❖ Validity of the homologation
- ❖ Product validity (if applicable)
- ❖ Photos or links to additional documents (if applicable)

**HARNAIS HOMOLOGUES PAR LA FIA SELON LA NORME FIA 8853-2016
HARNESSES HOMOLOGATED BY THE FIA ACCORDING TO THE FIA STANDARD 8853-2016**

LISTE TECHNIQUE N° 57 / TECHNICAL LIST N° 57



EN CLIQUANT ICI, VOUS POUVEZ TELECHARGER TOUTES LES FICHES DE PRESENTATION:
IF YOU CLICK HERE, YOU CAN DOWNLOAD ALL THE PRESENTATION FORMS:

Numéro homologation Homologation number	Nom commercial Commercial name	Homologation / Homologation					Harnais valide jusqu'au ⁽¹⁾ Harness valid until ⁽¹⁾
		Nbre fixations (extrémités sangles) Nb of attachments (strap end-fittings)	Boucle Buckle	Constructeur Manufacturer	Début Beginning	Fin End	
SH.001.16-T-6	NEW SPEC SALOON	6	T	SABELT	Oct-16	Oct-21	Dec-26
SH.002.16-T-6	SPORT	6	T	TAIWAN BIKE RACK (TBRACING)	Nov-16	Nov-21	Dec-26
SH.003.16-T-6	F1 S 2016	6	T	SABELT	Nov-16	Nov-21	Dec-26
SH.004.16-T-6	SALOON 2016	6	T	TWR	Dec-16	Dec-21	Dec-26
SH.005.16-T-6	04818RH	6	T	SPARCO	Dec-16	Dec-21	Dec-26
SH.006.16-T-6	E1	6	T	SABELT	Dec-16	Dec-21	Dec-26

**SIEGES DE COMPETITION HAUTE PERFORMANCE HOMOLOGUES SELON LA NORME FIA 8862-2009
ADVANCED RACING SEATS HOMOLOGATED ACCORDING TO THE FIA STANDARD 8862-2009**

NON VALABLE APRES LE 31.12.2021
NOT VALID AFTER 31.12.2021



NOUVELLE ETIQUETTE EN VIGUEUR A COMPTER DU 01.01.2012
NEW LABEL IN EFFECT AS FROM 01.01.2012



IMPORTANTE / IMPORTANT

Utilisation des supports homologués sous réserve du Règlement Technique de la catégorie concernée /
Use of the homologated brackets subject to the Technical Regulations of the category concerned

EN CLIQUANT ICI, VOUS POUVEZ TELECHARGER DES DETAILS REQUIS DES POINTS D'ANCRAGE DES SUPPORTS POUR RALLYE
IF YOU CLICK HERE, YOU CAN DOWNLOAD REQUIRED DETAILS OF THE ANCHORAGE OF THE RALLY SEAT BRACKETS:

LISTE TECHNIQUE N° 40 / TECHNICAL LIST N° 40

N° Homol.	Constructeur manufacturer	Modèle Model	Supports du siège pour circuit Plancher Circuit seat brackets Floor	Supports du siège pour circuit Dossier Circuit seat brackets Back	Supports du siège pour rallye Rally seat brackets	Début d'Homol. Beginning of homol.	Fin d'Homol. ⁽¹⁾ End of homol. ⁽¹⁾	Siege valide jusqu'au ⁽²⁾ Seat valid until ⁽²⁾
AS.001.09	OMP ⁽³⁾	HTE-ONE	HC/880	N/A		11-12-09	N/A	N/A
AS.002.10	RACETECH	RT4129WTHR	RTB1009M	RTB1006BW		15.01.10	01.22	12.32

⁽¹⁾ La date de fin d'homologation représente la date limite à laquelle les sièges peuvent être fabriqués. / The homologation end date represents the final date on which the seats may be manufactured.
⁽²⁾ La validité du produit doit toujours être celle qui est indiquée sur l'étiquette d'homologation du produit. Les dates indiquées dans cette colonne sont les dernières dates possibles pouvant figurer sur l'étiquette d'homologation / The validity of the product must always be that which is indicated on the product homologation label. The dates in this column are the latest possible dates that can be shown on the homologation label.

➤ Homologation End Date

- ❖ The date until which the manufacturer can produce the model
- ❖ Each homologation have a beginning and an end => production !
- ❖ In some cases, it can be extended

Numéro homologation <i>Homologation number</i>	Nom commercial <i>Commercial name</i>	Constructeur <i>Manufacturer</i>	Début d'homologation <i>Homologation beginning</i>	Fin d'homologation ⁽¹⁾ <i>Homologation end⁽¹⁾</i>
RS.001.01	TECNICA	OMP	01.12.01	31.12.17
RS.002.01	TECNICA LUCIDA	OMP	01.12.01	31.12.17
RS.003.01	SUPERFIRST	OMP	01.12.01	31.12.17

➤ Product validity

- ❖ The date until which the driver can use its product
- ❖ A product can be valid even after the homologation end date

Homologation / Homologation									
Numéro homologation <i>Homologation number</i>	Nom commercial <i>Commercial name</i>	Norme <i>Standard</i>	Nbre sangles en contact avec le pilote <i>Number of straps in contact with the driver</i>	Nbre fixations (extrémités sangles) <i>Number of attachments (strap end-fittings)</i>	Boucle <i>Buckle</i>	Constructeur <i>Manufacturer</i>	Début <i>Beginning</i>	Fin <i>End</i>	Harnais valide jusqu'au ⁽¹⁾ <i>Harness valid until⁽¹⁾</i>
D-100.T/98	692	8853/98	6	6	T	Securon	Nov-97	Dec-17	Dec-22
B-101.T/98	692	8854/98	4	4	T	Securon	Dec-97	Dec-17	Dec-22
D-102.T/98	693	8853/98	6	6	T	Securon	Dec-97	Dec-17	Dec-22
B-103.T/98	693	8854/98	4	4	T	Securon	Dec-97	Dec-17	Dec-22

➤ *Where can I find them?*

❖ <http://www.fia.com/>

➤ *Updating of the technical lists*

- ❖ Up to twice per month
- ❖ Last version always on the website
- ❖ Date indicated on each foot page

➤ *Important:*

Before any event, download the up to date technical list.

*A product with a **correct label** may **not be valid anymore!***

- ❖ The homologation may have expired
- ❖ The homologation may have been withdrawn



➤ *What is a presentation form?*

- ❖ A document describing in details an homologated products (1 for each product)
- ❖ Support scrutineering
- ❖ Published on FIA website www.fia.com but “hidden” (link in technical list)

➤ *What information is included?*

- ❖ Homologation number
- ❖ Manufacturer and model names
- ❖ Pictures of the product and labels
- ❖ Details and accessories

➤ *Which products?*

- 8859-2015 Premium Helmets
- 8853-2016 Safety harnesses
- 8865-2015 Extinguishers
- 8862-2013 Racing nets
- 8860-2018 Helmets
- 8856-2018 Protective clothing

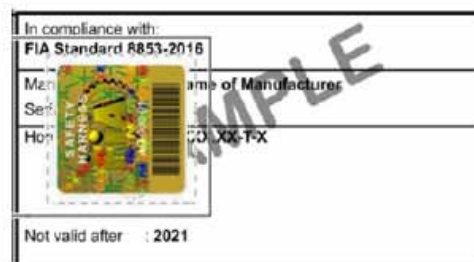
How and where to find them?

FIA

Liste N°57

HARNAIS HOMOLOGUES PAR LA FIA SELON LA NORME FIA 8853-2016
 HARNESSES HOMOLOGATED BY THE FIA ACCORDING TO THE FIA STANDARD 8853-2016

LISTE TECHNIQUE N° 57 / TECHNICAL LIST N° 57



[EN CLIQUANT ICI, VOUS POUVEZ TELECHARGER TOUTES LES FICHES DE PRESENTATION:](#)

[IF YOU CLICK HERE, YOU CAN DOWNLOAD ALL THE PRESENTATION FORMS:](#)

Numéro homologation <i>Homologation number</i>	Nom commercial <i>Commercial name</i>	Homologation / Homologation			Début <i>Beginning</i>	Fin <i>End</i>	Harnais valide jusqu'au ⁽¹⁾ <i>Harness valid until⁽¹⁾</i>
		Nbre fixations (extrémités sangles) <i>Nb of attachments (strap end-fittings)</i>	Boucle <i>Buckle</i>	Constructeur <i>Manufacturer</i>			
SH.001.16-T-6	NEW SPEC SALOON	6	T	SABELT	Oct-16	Oct-21	Dec-26
SH.002.16-T-6	SPORT	6	T	TAIWAN BIKE RACK (TBRACING)	Nov-16	Nov-21	Dec-26
SH.003.16-T-6	F1 S 2016	6	T	SABELT	Nov-16	Nov-21	Dec-26

- Presented overview of the product (helmet, harness, extinguisher, etc.)
- Presented mandatory parts of the equipment

- Presented options, which are approved
- Shown label examples
- Detailed photos of the products, when necessary

		FEDERATION INTERNATIONALE DE L'AUTOMOBILE		Homologation N° SH.001.16-T-6
				Date 29/11/2017
FICHE DE PRESENTATION DES HARNAIS DE SECURITE (NORME FIA 8853-2016) PRESENTATION FORM FOR SAFETY HARNESSES (FIA STANDARD 8853-2016)				
1. GENERALITES / GENERAL				
101. CONSTRUCTEUR / MANUFACTURER				
SABELT S.P.A. 2) Address VIA G. ROSSA, 19 - 10024 MONCALIERI (TO) - ITALY 3) Telephone +39 011 647911 4) E-mail INFO@SABELT.COM				
102. PHOTO DU HARNAIS COMPLET / PICTURE OF THE COMPLETE HARNESS				
103. MODELE DU HARNAIS / HARNESS MODEL				
2) Model NEW SPEC SALOON				

Marque SABELT	Modèle NEW SPEC SALOON	Homologation N° SH.001.16-T-6
201. VUE DES DEPENDANTS DE PRODUCE / DETACHED PARTS VIEW		
60-1) Position / Position : left and right shoulder body strap 	60-2) Position / Position : left and right recumbent body strap 	
61-1) Position / Position : left and right leg strap 	61-2) Position / Position : left and right ankle strap 	
104. EQUIPEMENT		
20-1) Buckle à double corps / Full mesh buckle: <input type="checkbox"/> Manoir <input checked="" type="checkbox"/> Manoir		
40-1) VUE DE PRODUCE / OTHER VIEW 		

Marque SABELT	Modèle NEW SPEC SALOON	Homologation N° SH.001.16-T-6
3. ETIQUETTES D'HOMOLOGATION ET DE IDENTIFICATION / HOMOLOGATION AND IDENTIFICATION LABELS		
301. ETIQUETTES / LABELS		
a) Dimensions (mm) Dimension (mm)	Etiquette d'homologation Homologation label 44 x 84	Etiquette d'identification Identification label 44 x 40
81-1) Etiquette d'homologation et autocollant FIA cousus sur le harnais Homologation label and FIA sticker attached on the harness		81-2) Etiquette d'homologation cousus sur le harnais Homologation label attached on the harness



APPENDIX J - ARTICLE 251 / CHANGE OF NAMES FOR 2020

ART. 1	CLASSIFICATION	CLASSIFICATION
1.1	Catégories et groupes	Categories and groups
	<u>Les automobiles utilisées en compétition sont réparties dans les catégories et groupes suivants:</u>	<u>The cars used in competition are divided up into the following categories and groups:</u>
	Catégorie I	Category I
	<ul style="list-style-type: none"> • Groupe N → Voitures de Production • Groupe A → Voitures de Tourisme • Groupes R* → Voitures de Tourisme ou de Grande Production de Série *Rally5/Rally4/Rally3/Rally2 à partir de 2020 • Groupe E-I → Voitures de Course de Formule Libre 	<ul style="list-style-type: none"> • Group N → Production Cars • Group A → Touring Cars • Groups R* → Touring Cars or Large Scale Series Production Cars *Rally5/Rally4/Rally3/Rally2 as from 2020 • Group E-I → Free Formula Racing Cars
	Catégorie II	Category II
	<ul style="list-style-type: none"> • Groupe R-GT → Voitures GT de Production • Groupe GT3 → Voitures de Grand Tourisme de Coupe • Groupe CN → Voitures de Sport Production • Groupe D → Voitures de Course de Formule Internationale • Groupe E-II → Voitures de Course de Formule Libre 	<ul style="list-style-type: none"> • Group R-GT → GT Production Cars • Group GT3 → Cup Grand Touring Cars • Group CN → Production Sports Cars • Group D → International Formula Racing Cars • Group E-II → Free Formula Racing Cars
	Catégorie III	Category III
	• Groupe F → Camions de Course	• Group F → Racing Trucks

2019: R1/R2/R3/R5) => 2020 :Rally 5 / Rally 4 / R3 / Rally 2



ELIGIBLE CARS FOR WRC RALLYS

CLASSES	GROUPES / GROUPS	
RC1	World Rally Cars : moteur 1.6 T	<ul style="list-style-type: none"> World Rally Cars, conformes à l'Art. 255A de l'Annexe J 2020, lorsque conduites par un pilote ayant obtenu l'approbation de la FIA World Rally Cars homologuées avant le 31.12.2013, conformes à l'extension d'homologation 100/01 KSR et à son extension WR, ainsi qu'à l'Art. 255A de l'Annexe J 2013. Seules les voitures WRC dotées d'un passeport de la FIA délivré avant le 31/12/2016 sont admises. World Rally Cars homologuées à partir du 01.01.2014, conformes à l'extension d'homologation 200/01 WRC ainsi qu'à l'Art. 255A de l'Annexe J 2016. Seules les voitures WRC dotées d'un passeport de la FIA délivré avant le 31/12/2016 sont admises. World Rally Cars homologuées à partir du 01.01.2015, conformes à l'extension d'homologation 300/01 WRC et à l'Art. 255A de l'Annexe J 2016. Seules les voitures WRC dotées d'un passeport FIA délivré avant le 31/12/2016 sont admises.
	World Rally Cars: 1.6 T engine	<ul style="list-style-type: none"> World Rally Cars, complying with the 2020 Appendix J, Art. 255A, when driven by a driver who has obtained the approval of the FIA World Rally Cars homologated before 31.12.2013, complying with homologation extension 100/01 KSR and its WR extension, and with the 2013 Appendix J, Art. 255A. Only WRC cars with an FIA passport issued before 31/12/2016 are allowed World Rally Cars homologated as from 01.01.2014, complying with homologation extension 200/01 WRC and with the 2016 Appendix J, Art. 255A. Only WRC cars with an FIA passport issued before 31/12/2016 are allowed. World Rally Cars homologated as from 01.01.2015, complying with homologation extension 300/01 WRC and with the 2016 Appendix J, Art. 255A. Only WRC cars with an FIA passport issued before 31/12/2016 are allowed.
RC2	Groupe Rally2 Group Rally2 Group Rally2 Kit Group Rally2 Kit	<ul style="list-style-type: none"> Voitures du Groupe Rally2 conformes à l'Annexe J 2020, Art. 261. Group Rally2 cars conforming to the 2020 Appendix J, Art. 261. Voitures equipées du Rally2 Kit conformes à l'Annexe J 2020, Art. 260E. Car fitted with Rally2 Kit cars confirming to the 2020 Appendix J, Art. 260E

RGT	Voitures RGT / RGT cars	<ul style="list-style-type: none"> Voitures du Groupe RGT conformes à l'Art. 256 de l'Annexe J 2019. Voitures du Groupe RGT conformes à l'Art. 256 de l'Annexe J 2020. Group RGT cars conforming to the 2019 Appendix J, Art. 256. Group RGT cars conforming to the 2020 Appendix J, Art. 256.
RC3	R3 (atmo entre 1600 cm3 et 2000 cm3 et turbo entre 1067 cm3 et 1333 cm3) R3 (atmo / over 1600cc and up to 2000cc and turbo over 1067cc and up to 1333cc)	<ul style="list-style-type: none"> Voitures du Groupe R homologuées avant le 31/12/2019 et conformes à l'Art. 260 de l'Annexe J 2019 Group R cars homologated before 31/12/19 and conforming to the 2019 Appendix J, Art. 260
	R3 (turbo jusqu'à 1620 cm3 / nominal) R3 (turbo / up to 1620cc / nominal)	<ul style="list-style-type: none"> Voitures du Groupe R homologuées avant le 31/12/2019 et conformes à l'Art. 260D de l'Annexe J 2019. Group R cars homologated before 31/12/19 and conforming to the 2019 Appendix J, Art. 260D
RC4A	Rally4 (atmo entre 1600 cm ³ et 2000 cm ³ – et turbo entre 1067 cm ³ et 1333 cm ³)	<ul style="list-style-type: none"> Voitures du Groupe Rally4 homologuées a partir du le 01/01/2019 conformes à l'Art. 260 de l'Annexe J 2020 Group Rally4 cars homologated from 01/01/19 and conforming to the 2020 Appendix J, Art. 260
RC4B	Rally4 (atmo entre 1390 cm ³ et 1600 cm ³ – et turbo entre 927 cm ³ et 1067 cm ³) Rally4 (atmo over 1390cc and up to 1600cc – and turbo	<ul style="list-style-type: none"> Voitures du Groupe Rally4 homologuées a partir du le 01/01/2019 conformes à l'Art. 260 de l'Annexe J 2020 Voitures du Groupe R2 homologuées avant le 31/12/2018 et conformes à l'Art. 260 de l'Annexe J 2018 Group Rally4 cars homologated from 01/01/2019 and conforming to the 2020 Appendix J, Art. 260 Group R2 cars homologated before 31/12/2018 and conforming to the 2018 Appendix J, Art. 260

RCS	Rally5 (atmo jusqu'à 1600 cm ³ et turbo jusqu'à 1333 cm ³) Rally5 (atmo up to 1600cc and turbo up to 1333cc)	<ul style="list-style-type: none"> Voitures du Groupe Rally5 homologuées a partir du 01/01/2019 et conformes à l'Art. 260 de l'Annexe J 2020 Group Rally5 cars homologated from 01/01/19 and conforming to the 2020 Appendix J, Art. 260
	Rally5 (atmo jusqu'à 1600 cm ³ et turbo jusqu'à 1067 cm ³) Rally5 (atmo up to 1600cc and turbo up to 1067cc)	<ul style="list-style-type: none"> Voitures du Groupe R1 homologuées avant le 31/12/2018 et conformes à l'Art. 260 de l'Annexe J 2018 Group R1 cars homologated before 31/12/2018 and conforming to the 2018 Appendix J, Art. 260

In addition, National cars:

12.3 NATIONAL/REGIONAL CARS

12.3.1 Cars homologated or approved by the ASN of the organising country will be permitted to take part in WRC events if stipulated in the supplementary regulations, without eligibility to score Championship points.

12.3.2 These cars must, however, comply with the safety requirements as stipulated in Appendix J, Art. 253 and with all other applicable provisions and procedures stipulated in the present Regulations (e.g. tyres, barcodes, fuel, restart regulations etc.).

12.3.3 Prior to the rally, the organiser will propose to the FIA a list of cars for approval.

12.3.4 Drivers entered in the national class shall always use a different entry form.



RC2	Groupe Rally2 Group Rally2	- Voitures du Groupe Rally2 conformes à l'Annexe J 2020, Art. 261. - Group Rally2 cars conforming to the 2020 Appendix J, Art. 261.	
	Groupe Rally2 Kit (VR4K) Group Rally2 Kit (VR4K)	- Voitures équipées du Kit R4 conformes à l'Art. 260E de l'Annexe J 2020 - Cars fitted with R4 Kit conforming to the 2020 Appendix J, Art. 260E	
	Groupe NR4 de plus de 2000 cm ³ Group NR4 over 2000cc	- Voitures du Groupe N conformes à l'Art. 254 de l'Annexe J 2019 - Group N cars conforming to the 2019 Appendix J, Art. 254	
	S2000-Rallye : atmosphérique 2.0 S2000-Rallye : 2.0 Atmospheric	- Voitures Super 2000 (Annexe J, Article 254A de l'Annexe J 2013). - Super 2000 cars (conforming to the 2013 Appendix J, Article 254A)	
	Groupe R4 (VR4) (non valable en Europe) Group R4 (VR4) (not eligible in Europe)	- Voitures du Groupe R4 conformes à l'Art. 260 de l'Annexe J 2018 - Group R4 cars conforming to the 2018 Appendix J, Art. 260	
RGT	Voitures RGT RGT cars	- Voitures du Groupe RGT conformes à l'Art. 256 de l'Annexe J 2019. - Voitures du Groupe RGT conformes à l'Art. 256 de l'Annexe J 2020. - Group RGT cars conforming to the 2019 Appendix J, Art. 256. - Group RGT cars conforming to the 2020 Appendix J, Art. 256.	
RC3	R3 (atmo entre 1600 cm ³ et 2000 cm ³ et turbo entre 1067 cm ³ et 1333 cm ³) R3 (atmo / over 1600cc and up to 2000cc and turbo over 1067cc and up to 1333cc)	- Voitures du Groupe R homologuées avant le 31/12/2019 et conformes à l'Art. 260 de l'Annexe J 2019 - Group R cars homologated before 31/12/2019 and conforming to the 2019 Appendix J, Art. 260	
	R3 (turbo jusqu'à 1620 cm ³ / nominal) R3 (turbo / up to 1620cc / nominal)	- Voitures du Groupe R homologuées avant le 31/12/2019 et conformes à l'Art. 260D de l'Annexe J 2019 - Group R cars homologated before 31/12/2019 and conforming to the 2019 Appendix J, Art. 260D	
	Groupe A entre 1600 cm ³ et 2000cm ³ Group A over 1600cc and up to 2000cc	- Voitures du Groupe A conformes à l'Art. 255 de l'Annexe J 2019 - Group A cars conforming to the 2019 Appendix J, Art. 255	
	Rally4 (atmo entre 1600 cm ³ et 2000 cm ³ et turbo entre 1067 cm ³ et 1333 cm ³) Rally4 (atmo over 1600cc and up to 2000cc and turbo over 1067cc and up to 1333cc)	- Voitures du Groupe Rally4 homologuées à partir du 01/01/2019 et conformes à l'Art. 260 de l'Annexe J 2020 - Group Rally4 cars homologated from 01/01/2019 and conforming to the 2020 Appendix J, Art. 260	
RC4	RC4A	Rally4 (atmo entre 1390 cm ³ et 1600 cm ³ et turbo entre 927 cm ³ et 1067 cm ³) Rally4 (atmo over 1390cc and up to 1600cc and turbo over 927cc and up to 1067cc)	- Voitures du Groupe Rally4 homologuées à partir du 01/01/2019 et conformes à l'Art. 260 de l'Annexe J 2020 - Voitures du Groupe R2 homologuées avant le 31/12/2018 et conformes à l'Art. 260 de l'Annexe J 2018 - Group Rally4 cars homologated from 01/01/2019 and conforming to the 2020 Appendix J, Art. 260 - Group R2 cars homologated before 31/12/2018 and conforming to the 2018 Appendix J, Art. 260
		Groupe A jusqu'à 1600 cm ³ Group A up to 1600cc	- Voitures du Groupe A conformes à l'Art. 255 de l'Annexe J 2019 - Group A cars conforming to the 2019 Appendix J, Art. 255
	RC4B	Rally5 (atmo jusqu'à 1600 cm ³ et turbo jusqu'à 1333 cm ³) Rally5 (atmo up to 1600cc and turbo up to 1333cc)	- Voitures du Groupe Rally5 homologuées à partir du 01/01/2019 et conformes à l'Art. 260 de l'Annexe J 2020 - Group Rally5 cars homologated from 01/01/2019 and conforming to the 2020 Appendix J, Art. 260
RC5	RC5A	Rally5 (atmo jusqu'à 1600 cm ³ et turbo jusqu'à 1067 cm ³) Rally5 (atmo up to 1600cc and turbo up to 1067cc)	- Voitures du Groupe R1 homologuées avant le 31/12/2018 et conformes à l'Art. 260 de l'Annexe J 2018 - Group R1 cars homologated before 31/12/2018 and conforming to the 2018 Appendix J, Art. 260
		Rally5 (atmo jusqu'à 1600 cm ³ et turbo jusqu'à 1067 cm ³) Rally5 (atmo up to 1600cc and turbo up to 1067cc)	- Voitures du Groupe R1 homologuées avant le 31/12/2018 et conformes à l'Art. 260 de l'Annexe J 2018 - Group R1 cars homologated before 31/12/2018 and conforming to the 2018 Appendix J, Art. 260
	RC5B	Rally5 (atmo jusqu'à 1600 cm ³ et turbo jusqu'à 1067 cm ³) Rally5 (atmo up to 1600cc and turbo up to 1067cc)	- Voitures du Groupe R1 homologuées avant le 31/12/2018 et conformes à l'Art. 260 de l'Annexe J 2018 - Group R1 cars homologated before 31/12/2018 and conforming to the 2018 Appendix J, Art. 260

International Sporting Code

2.7.1.c Unless there is an indication to the contrary on the homologation form excluding certain evolutions, Groups A, N, R and RGT *Automobiles* are permitted, during a further period of eight years following the expiry of their homologation, to participate in international *Rallies* other than those of the World Rally *Championship* on the following conditions:

2.7.1.c.i the *FIA* homologation papers are produced at administrative checking and at scrutineering;

2.7.1.c.ii the *Automobiles* are in conformity with the technical regulations (*Appendix J*) valid at the date of the expiry of their homologation and are in a sound condition to participate, at the discretion of the scrutineers.

2.7.1.d The size of turbo restrictors used on these *Automobiles* and the minimum weight must be those currently valid.

National cars => see specific RRC Sporting Regulations



List of homologated Rally 2-Kit cars is available at the end of Article 260E

Appendix J—Article 260E

ANNEXE 3 / APPENDIX 3


CARS FITTED WITH R4-KIT HOMOLOGATED BY THE ASNs AND REGISTERED BY THE FIA

R4-Kit FIA Homologation N°	Expiration Date	ASN	ASN Homologation N°	Model	Chassis N°	Safety Cage Certificate N°	Safety Cage Serial N°
VR4K-17-01	01.04.2029	FFSA	VR4K-001	Fiat 500X	ZFA3340000P517912	FFSA-497	FIAT 500X R4 01
VR4K-17-01	01.04.2029	FFSA	VR4K-002	Toyota Etios	9BRK29BT5F0051753	FFSA-500	TOYOTA ETIOS R4 01
VR4K-17-01	01.04.2029	FFSA	VR4K-003	Fiat 500X	ZFA3340000P367908	FFSA-497	FIAT 500X R4 02
VR4K-17-01	01.04.2029	RFEDA	R4-R-01	Dacia Sandero R4	UU15SDMC560377036	HES5090119	DS-101



R-GT cars before 31/12/2019:

- Only FIA passports
- Validity date specified on FIA passport
- 1 passport per car (1 VIN number & 1 safety cage)



Passeport Technique R-GT
R-GT Technical Passport



R-GT Passport N°

PTRGT-009

Passeport valable à partir du / Passport valid as from: **01 AOUT 2017**

Date d'expiration du passeport / Expiration date of the passport: **31 DEC. 2020**

Marquages FIA associés au passeport technique / FIA Marking associated with the technical passport: **R-GT-13-016 / FUJ 192**

1. GENERALITES / GENERAL	
101. CONSTRUCTEUR / MANUFACTURER	ABARTH A.C. SPA
102. MODELE ET TYPE / MODEL AND TYPE	
a) Modèle et type / Model and type	ABARTH 124 RALLY
b) Numéro de châssis / Chassis number	ZFANFEEKE 00108334
103. CYLINDRÉE / CYLINDER CAPACITY	
Cylindres totale / Cylinder capacity	1742 cm3
Cylindres corrigés / Corrected cylinder capacity	1742 X 1,7 = 2961,4 cm3
104. MODE DE CONSTRUCTION / TYPE OF CAR CONSTRUCTION	
a) Type	Séparé / separated <input type="checkbox"/> Mono-coque / unitary construction <input checked="" type="checkbox"/>
b) Matériau du châssis / coque / Material of chassis / bodyshell	STEEL
105. NOMBRE DE VOLUMES / NUMBER OF VOLUMES	
3	
106. NOMBRE DE PLACES / NUMBER OF PLACES	
2	
A1) Voiture vue de 3/4 avant gauche / Car seen from 3/4 front left	A2) Voiture vue de 3/4 arrière droit / Car seen from 3/4 rear
	

R-GT cars after 1/01/2020:

- No more FIA passport
- Cars will be homologated by car manufacturers yet
- Passeport issued before 31/12/2019 will be accepted until expired

Use of the basic Group A form completed as follows¶

Cars eligible in Rally5:¶

1) → Cars for which a VRa5 extension is homologated:¶

The following items homologated in VRa5 must be imperatively used:¶

- → Safety cage¶
- → Anchorages for seat supports¶
- → Safety harness mounting points¶

2) → Cars for which a VRa4 extension is homologated:¶

The following items homologated in VRa4 must be imperatively used:¶

- → Safety cage (including the modifications to the bodyshell for the mounting of the front and rear suspension top mounts)¶
- → Anchorages for seat supports¶
- → Safety harness mounting points¶

The following items homologated in VRa4 may be used:¶

- → Fuel tank and low pressure fuel pumps¶
- → Modification of the floor in order to install the fuel tank¶
- → Windscreen¶
- → Substitution part for diurnal lights¶
- → Foam to protect against lateral collisions¶
- → Sunroof / Roof Hatch¶
- → VO "modifications/lightening of the bodyshell"¶
- → The ground clearance (article 205) must comply VRa4.¶

Compulsory for:

- WRC cars
- Rally2 cars
- R-GT cars (see article 256 / Appendix J)



Article 251 / Appendix J:

For FIA championships, the FIA technical passport of WRC, S2000-Rally, Rally2 and R-GT cars must be presented at scrutineering for the competition.

In addition, the markings linked to the technical passport must not be removed under any circumstances.

2020 RRC SPORTING REGULATIONS:

« An FIA technical passport is mandatory for S2000, Rally2, Super 1600 cars. (optional for cars entered in a rally of an FIA Cup or Trophy)»

Remark: safety cage could also be built without certificate / in that case it must comply with art 253-8.2. from Appendix J 2016 or 2020 depending on homologation date of the car.

For safety cages of cars homologated before 01.01.2017, refer to Articles 253-8 of the 2016 Appendix J.

Car homologated after 01/01/2017: Must comply with Appendix J / 2020

8.3.2.30 Configuration minimale de l'armature de sécurité

La configuration minimale d'une armature de sécurité est définie de la façon suivante :

Voiture homologuée	Avec copilote	Sans copilote
entre le 01.01.2002 et le 31.12.2004	Dessin 253-35a	Dessin 253-36a ou symétrique
entre le 01.01.2005 et le 31.12.2006	Dessin 253-35b	Dessin 253-36b ou symétrique
à partir du 01.01.2009	Dessin 253-35c	Dessin 253-36c ou symétrique

Les entretoises de portières et le renfort de toit peuvent différer conformément aux Articles 253-8.3.2.1.2 et 253-8.3.2.1.3.

Configuration minimale de l'armature de sécurité

La configuration minimale d'une armature de sécurité est définie de la façon suivante :

Avec copilote	Sans copilote
Dessin 253-35	Dessin 253-36 ou symétrique

La structure de base peut différer conformément à l'Article 8.3.1. Les entretoises de portières et le renfort de toit peuvent différer conformément aux Articles 253-8.3.2.1.2 et 253-8.3.2.1.3.

Minimum configuration of the safety cage

The minimum configuration of a safety cage is defined as follows :

With co-driver	Without co-driver
Drawing 253-35	Drawing 253-36 or symmetrical

The base structure may vary according to Article 8.3.1. Doorbars and roof reinforcement may vary according to Articles 253-8.3.2.1.2 and 253-8.3.2.1.3.





Check if rollcage / seat anchorage for seat supports / seat supports ... are damaged before the team starts to repair the car !!!

Article 253/ Appendix J:

All repairs to a homologated or certified safety cage, damaged after an accident **must be carried out by the manufacturer of the cage or with his approval.**



➤ FIA standards:

- FIA standard 8853/98 ([TL24](#))


Compulsory until 31.12.2022
unless otherwise stated
in Article 6.1.2



- FIA standard 8853-2016 ([TL57](#))

compulsory for all WRC cars / S2000-Rallies
RGT / Rally2 / Rally 2-Kit



FIA Standard / validity date	FIA label template
<p>8853/98 (TL24) / 5 years</p>	<div style="display: flex; justify-content: space-around; align-items: flex-start;"> <div style="border: 1px solid black; padding: 5px; width: 150px; text-align: center;"> <p>not valid after 2002 For HANS use only FIA D-999.T/98</p> </div> <div style="border: 1px solid black; padding: 5px; width: 150px; text-align: center;"> <p>MANUFACTURER Manufacturer harness ltd not valid after 2002 For HANS use only FIA D-999.T/98</p> </div> </div> <div style="display: flex; justify-content: space-between; align-items: flex-start;"> <div style="border: 1px solid black; padding: 5px; width: 150px;"> <p>Manufacturer name (optional) not valid after 2018 For FHR use only FIA D-999.T/98</p> </div> <div style="border: 1px solid black; padding: 5px; width: 150px;"> <p>In compliance with: FIA Standard 8853/98 & 8854/</p> <p>Name of MA 8-145.T/98 MA 8-146.T/98 MA 8-147.T/98</p> </div> </div> <div style="text-align: right; margin-top: 20px;">  </div>

FIA Standard / validity date

8853-2016 (TL 57)/ 5 years

FIA label template



In compliance with: FIA Standard 8853-2016
Name of Manufacturer Serial N°: xxx xxx
Homologation N°: SH.XXX.XX-T-X
For FHR use only Not valid after : 2021

In compliance with: FIA Standard 8853-2016
Manufacturer Name: Name of Manufacturer Serial N°: xxx xxx For FHR use only
Homologation N°: SH.XXX.XX-T-X
Not valid after : 2021



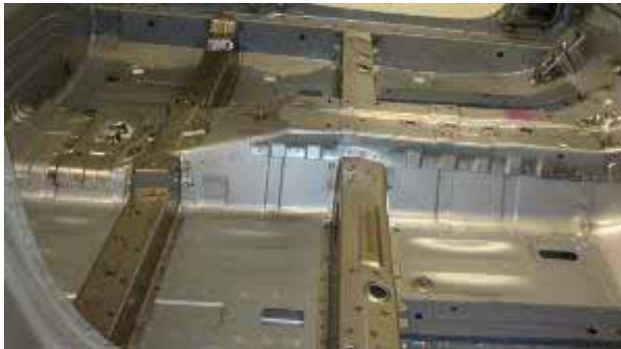
EXAMPLE OF FAKE HARNESES



Missing the FIA hologram
Wrong homologation label position

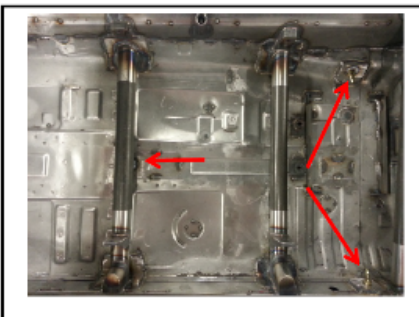
Must be:

- 1- Standard production part
- 2- VO homologated parts (see FIA homologation form from the car)
- 3- Built as per article 253 from Appendix J

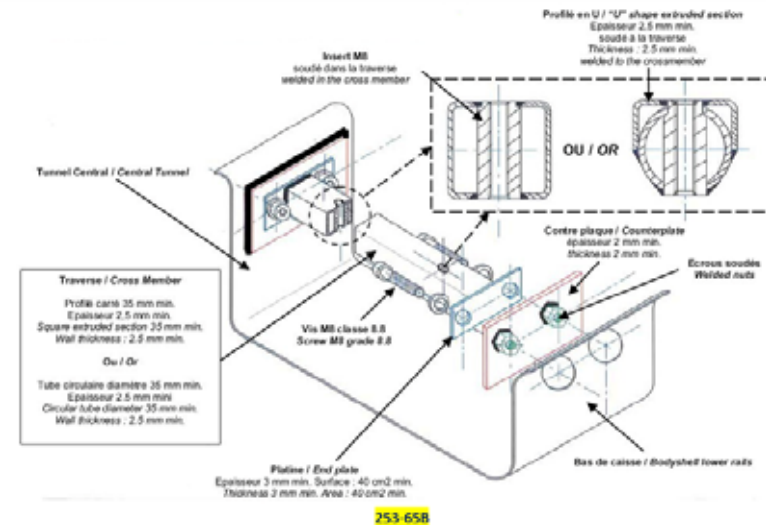
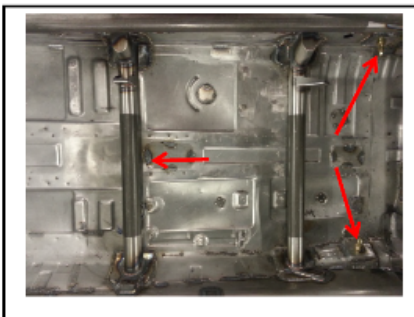


Extension		
9	Seat Mounting Bracket and Location of Harness Mountings; (Material: Steel); 40x2 mm Tubes Pillar for driver and co driver seats, Tolerance +/-1mm for diameter and +/- 0.25 mm for thickness	100 & 101

100 Left hand side



101 Right hand side



On anchorage points for fixing seats in conformity with Drawing 253-65B.

All components must be steel, except counterplates in case of chassis made in light alloy material (cf. Art. 253-16.5).

For shell/chassis made of steel, the bolts may be replaced by welding the end plate on the counterplate.

All the occupants' seats must be homologated by the FIA (8855/1999 or 8862/2009 standards), and not modified.

➤ FIA standards:

➤ FIA standard 8855-1999 ([TL12](#))



➤ FIA standard 8862-2009 ([TL40](#))
compulsory for WRC / S2000(1.6L Turbo) / Rally2 cars / Rally2-Kit



Refer to Technical List (no. 12 & 40) for further technical information information:

SIEGES DE COMPETITION HAUTE PERFORMANCE HOMOLOGUES SELON LA NORME FIA 8862-2009
 ADVANCED RACING SEATS HOMOLOGATED ACCORDING TO THE FIA STANDARD 8862-2009

NON VALABLE APRES LE 31.12.2021
 NOT VALID AFTER 31.12.2021



NOUVELLE ETIQUETTE EN VIGUEUR A COMPTER DU 01.01.2012
 NEW LABEL IN EFFECT AS FROM 01.01.2012



IMPORTANTE / IMPORTANT

Utilisation des supports homologués sous réserve du Règlement Technique de la catégorie concernée /
 Use of the homologated brackets subject to the Technical Regulations of the category concerned

- [EN CLIQUANT ICI, VOUS POUVEZ TELECHARGER DES DETAILS REQUIS DES POINTS D'ANCRAGE DES SUPPORTS POUR RALLYE](#)
- [IF YOU CLICK HERE, YOU CAN DOWNLOAD REQUIRED DETAILS OF THE ANCHORAGE OF THE RALLY SEAT BRACKETS:](#)

LISTE TECHNIQUE N° 40 / TECHNICAL LIST N° 40

N° Homol.	Constructeur manufacturer	Modèle Model	Supports du siège pour circuit Plancher Circuit seat brackets Floor	Supports du siège pour circuit Dossier Circuit seat brackets Back	Supports du siège pour rallye Rally seat brackets	Début d'Homol. Beginning of homol.	Fin d'Homol. ⁽¹⁾ End of homol. ⁽¹⁾	Siège valide jusqu'au ⁽²⁾ Seat valid until ⁽²⁾
AS.001.09	OMP ⁽¹⁾	HTE-ONE	HC88D	N/A		11.12.09	N/A	N/A
AS.002.10	RACETECH	RT4129WTHR	RTB1009M	RTB1006BW		15.01.10	01.22	12.02

(1) La date de fin d'homologation correspond à la date limite à laquelle les sièges peuvent être fabriqués. (The homologation end date represents the final date on which the seats may be manufactured)

AS.037.14	SPARCO	ADV ELITE	004988ADV	N/A		21.10.14		
					T30020053	17.12.19		
					T30020054		10.24	12.34
					T30020047	17.12.19		
					T30020048	17.12.19		
AS.038.15	VOLKSWAGEN MOTORSPORT	VWMS RACING SEAT	WSK_015_823_E/01	N/A		24.04.15	04.20	12.30
AS.039.15	SABELT	GT-625L <i>for circuit events only</i>	RA8862019	N/A		29.04.15	04.20	12.30

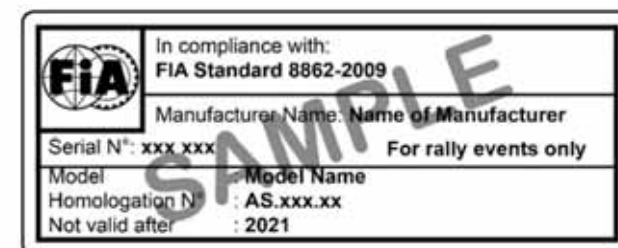
Details of anchorage of the rally seat brackets

Some models may not be allowed for rallying

Specific supports homologated for rally

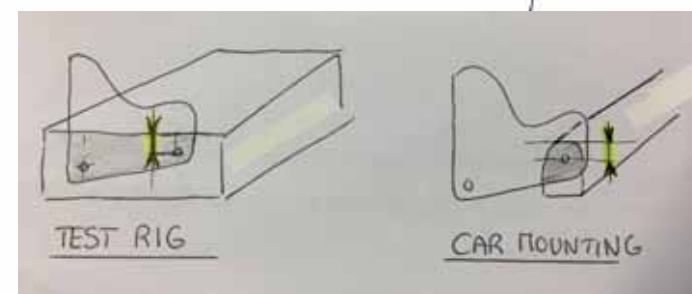
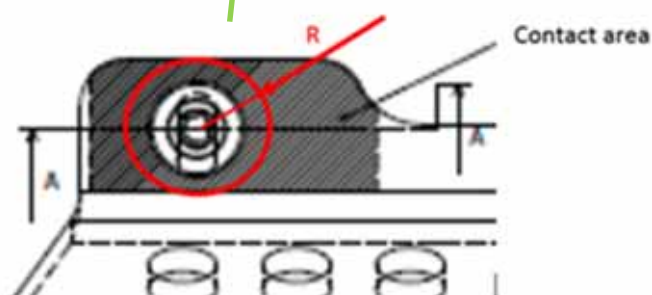
The use of supports homologated with the seat in accordance with the Technical List n°40 is **compulsory for WRC cars**.
 For Rallies only until 31.12.2020, seats may be used with supports homologated by the car manufacturers in option variant (**other groups than WRC cars**).

As from 1.1.2020, the WRC cars complying with 2020 article 255A **must be fitted** with 8862-2009 FIA-approved seat brackets. The seat brackets must have the following label



DETAILS DES POINTS D'ANCRAGE DES SUPPORTS POUR RALLYE HOMOLOGUES SELON LA NORME FIA 8862-2009
 DETAILS OF THE ANCHORAGES FOR RALLY SEAT BRACKETS HOMOLOGATED ACCORDING TO THE FIA STANDARD 8862-2009

N° Homol.	Supports du siège pour rallye <i>Rally seat brackets</i>	Surface de contact totale entre les support de siège (gauge + droit) et les points d'ancrage sur la voiture (mm ²) <i>Total contact area between the seat supports (left + right support) and the mounting points on the car (mm²)</i>	Rayon minium de la surface de contact (mm) <i>Minimum radius of the contact area (mm)</i>	Distance vertical maximum du point d'ancrage au bord de l'ancrage uniquement pour les supports de type lame (mm) <i>Maximum vertical distance from the mounting point to the edge of the anchorage (only for blade type supports) (mm)</i>
AS.007.10	TA22050229B	1194	11	11
AS.016.11	T30020049 T30020050	2320	15	N/A
AS.022.12	T30020049 T30020050	2320	15	N/A
	T30020059 T30020060	3530	16.5	N/A



FIA Standard / validity date

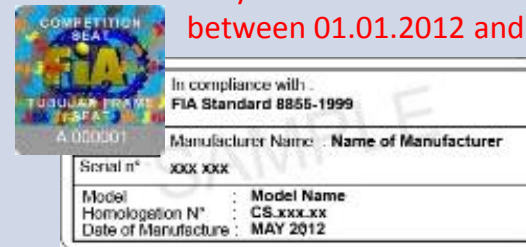
8855-1999 (TL12) / 5 years

FIA label template

Not valid after 31.12.2016



Only valid for seats manufactured between 01.01.2012 and 31.12.2013



FIA Standard / validity date

8862-2009 (TL40) / 10 years

FIA label template



NOT VALID AFTER 31.12.2021

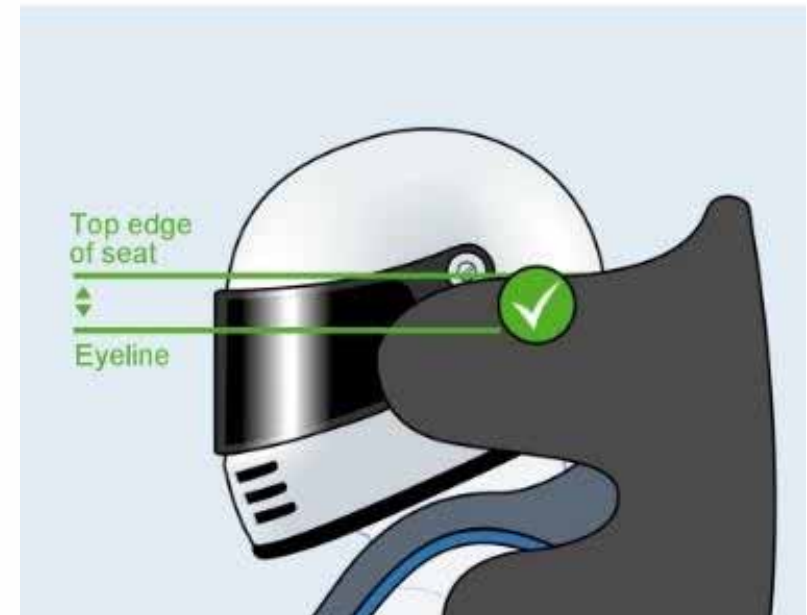
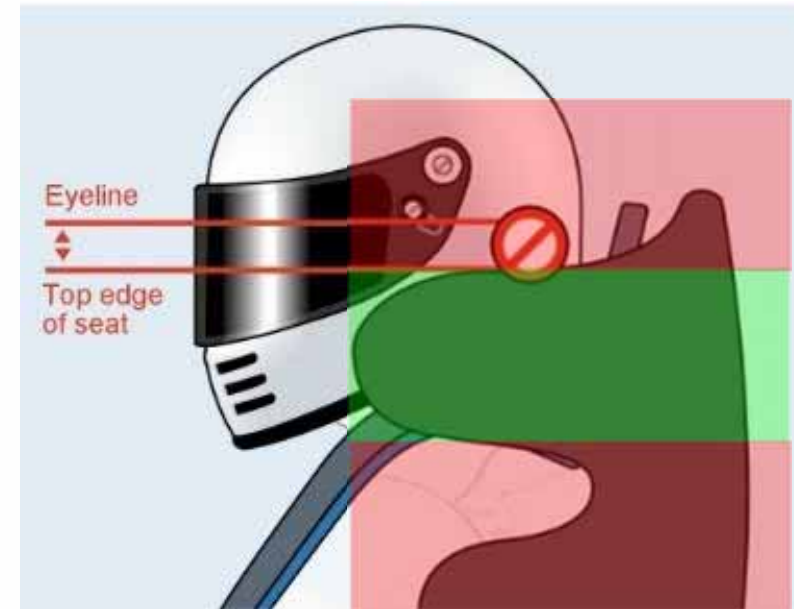


FIA Standard 8862-2009 “Advanced Seats”

Correct seating position is vital

⇒ Enable the seat to protect efficiently

⇒ See article 253-16



FIA STANDARDS

- Hand-held extinguisher (according to Article 253.7.3)



Permitted extinguishants :

AFFF, FX G-TEC, Viro3, powder or any other extinguishant homologated by the FIA.

Minimum quantity of extinguishant :

- AFFF 2.4 litres
- FX G-TEC 2.0 kg
- Viro3 2.0 kg
- Zero 360 2.0 kg
- Powder 2.0 kg

Hand held extinguisher (1 or 2) / mandatory

- ✓ The following information must be visible on each extinguisher Sticker:
Capacity (Bottle volume) / Type of extinguishant / Weight or volume of the extinguishant / Next inspection date (filling date is acceptable as an inspection date).
- ✓ Inspection period for bottle is max. 2 years

- FIA standard 8865-2015 (TL n°52)



	In compliance with: FIA Standard 8865-2015	Homologation label
	Manufacturer Name: Name of Manufacturer	
Serial N°: xxx xxx		
Model	Model Name	Maintenance label
Homologation N°	EX XXX XX	
Type of Extinguishant	Extinguishing medium	
Range of Temperature	-15°C to 80°C	
Class of Fire	Class F (Petrol in accordance with Art. 9 of Article 252 of the 2014 Appendix J)	
Weight/Volume of		
* Complete bottle	:xx kg	
* Extinguishant	:yy kg or yy lt	
Service carried out by: Name - «Name of Manufacturer»		Maintenance label
Serial N°: xxx xxx		
Date of Service	JAN 2019	Maintenance label
Date of Next Service	: JAN 2021	

Must be 2 correctly filled labels:

- Homologation label
- Maintenance label (+FIA holographic sticker)

For WRC rallys, all cars must be equipped with an extinguishing system in compliance with: **FIA Standard 8865-2015 (see Art. 7.1)**

For all other Rallys, **FIA Standard 8865-2015 is compulsory for all cars except Group A & Group N cars**

The system must be used in accordance with the manufacturer's instructions and Technical list no. 52.

- ❑ FIA standard for Plumbed-in Fire Extinguisher systems (TL n°16)

In WRC rallys, mandatory for Groups, where extinguisher FIA Standard 8865-2015 is not mandatory:

- National class

In other Rallys, mandatory for Group A & Group N

Requirements for fixation, service – not changed (please refer to Article 253.7.3)



SAFETY FUEL TANK IS COMPULSORY FOR ALL CARS ENTERED IN RALLYS

□ WHAT LABELS ?

- On the surface of the bladder
- Permanently fixed – self-destructive on removal
- Old labelling not valid after **31.12.2017** (unless 2y re-certification)
- New labelling with hologram from **01.01.2013**

▪ FT3 and FT3.5

- FIA label 84x34
- FIA hologram SILVER



▪ FT5

- FIA label 84x34
- FIA hologram GOLD



- ❑ WHAT LABELS for RE-CERTIFICATION ?
 - Validity extension up to 2 years
 - Bladder must be sent back for inspection
 - Only done by the original manufacturer

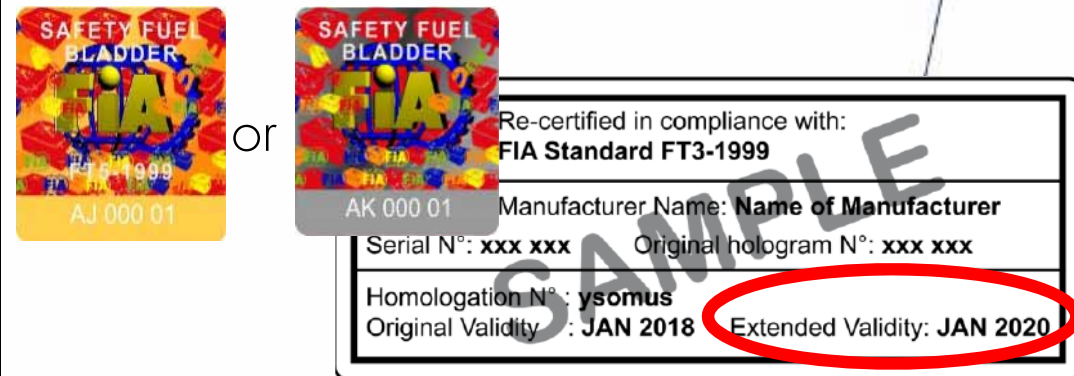
Before 01.07.2017

- Original label & hologram kept
- Addition of a small label



From 01.07.2017

- **New** label + **New** hologram to be fitted



❑ LABELLING MISTAKES



Article 3 «Frontal Head Restraint Device» of the Chapter III – «Driver's Equipment» to the ISC

- FIA-approved FHR Systems ([TL36](#) & [TL29](#))
 - HANS® & HANS® Adjustable system
 - Hybrid® & Hybrid Pro® system

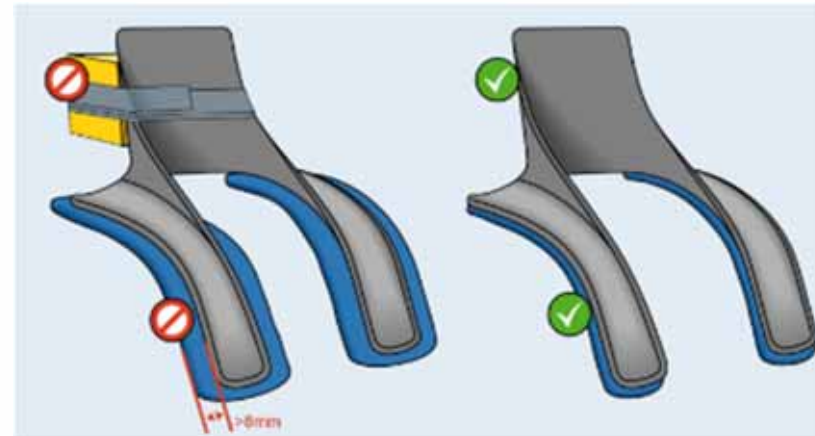


FIA Standard / validity date	FIA label template
8858-2002 (TL29) / TBD	<div data-bbox="824 603 1368 810" data-label="Image"> </div> <div data-bbox="1406 528 1888 887" data-label="Image"> </div>
<p>8858-2010 (TL29) / TBD</p> <p>Compulsory as from 1.1.2013 (item manufactured)</p>	<div data-bbox="808 946 1323 1129" data-label="Image"> </div> <div data-bbox="815 1139 1339 1374" data-label="Image"> </div> <div data-bbox="1373 943 1924 1361" data-label="Image"> </div>

CRITICAL ISSUES & MISTAKES

- HANS – Padding
 - Addition padding
 - Incorrect yoke padding
 - max width = 8mm
 - max thickness = 15mm
 - must be flame-proof

- HANS – Friction rubber
 - Good condition, not modified nor removed
 - Replace – only strictly done according to device's manufacturer's instructions



ALWAYS HAVE BOTH TETHERS ATTACHED TO HELMET

NOT ONLY 1 TETHER

FHR becomes totally inefficient

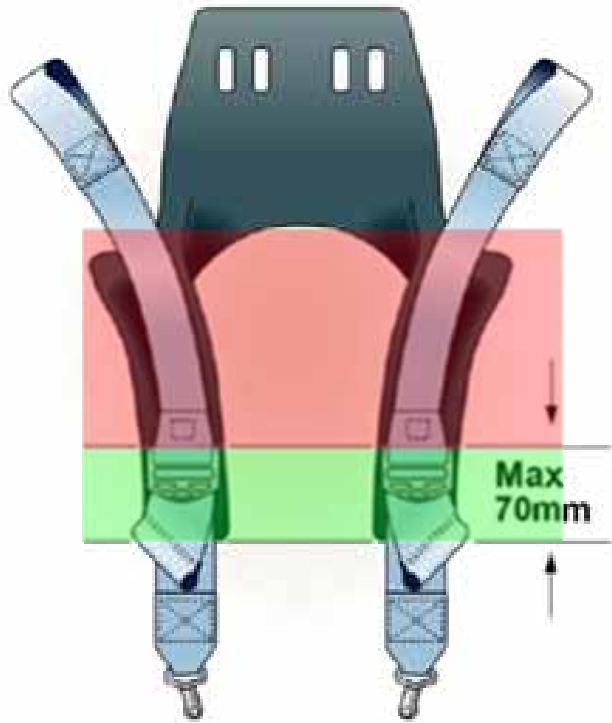


HANS ON TOP OF HARNESS STRAPS

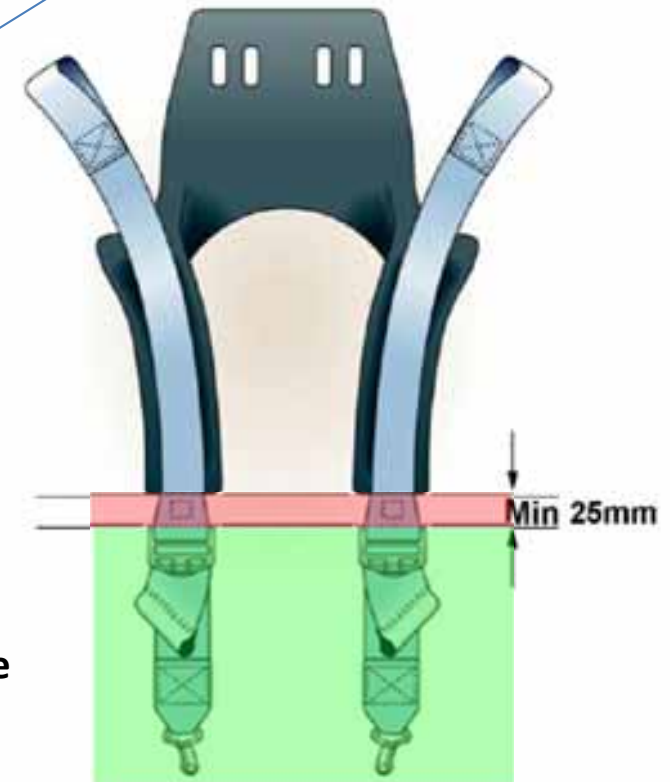
HANS becomes totally inefficient



NO REGULATORY
VALUE



Adjuster **ON TOP OF THE YOKE**,
maximum 70mm
ABOVE the bottom edge of the yoke



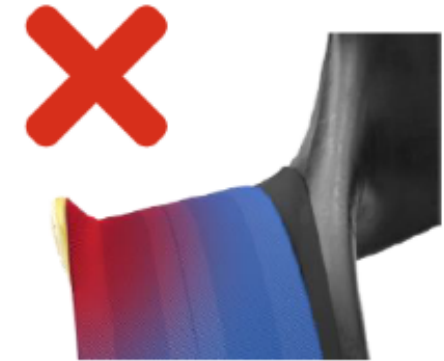
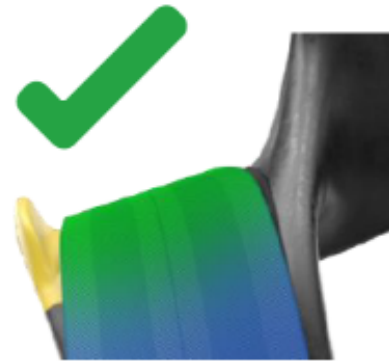
Adjuster **BELOW THE YOKE**,
At least 25mm
BELOW the bottom edge of the yoke

NO REGULATORY
VALUE

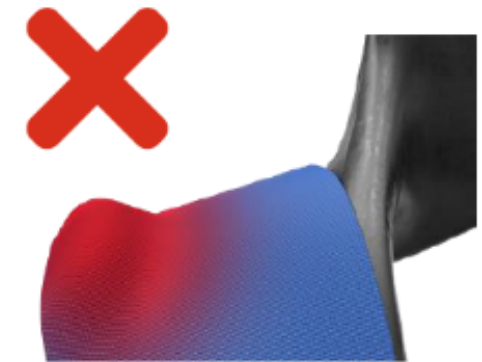
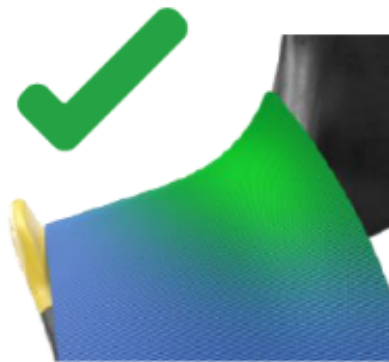
□ HANS BELT ROUTING

- HANS are compatible with 2" or 3" belts
- Important to position the belts correctly
- Risk of webbing slippage

Routing of 2" webbing



Routing of 3" webbing



NO REGULATORY
VALUE

- **Article 1 «Helmets» of the Chapter III «Driver's Equipment» of the Appendix L to the ISC**
- FIA-recognised helmet standards recognised by FIA ([TL25](#))
- FIA helmet standards to be used together with FHR systems:
 - FIA standard 8858-2002 & 8858-2010 ([TL41](#))+Snell SA2010 or SAH2010
 - FIA standard 8859-2015 ([TL49](#))
 - FIA standard 8860-2004 & 8860-2010 ([TL33](#))
 - FIA standard 8860-2018 & 8860-2018-ABP ([TL69](#)) **(compulsory for P1 drivers since 01/01/2019)**

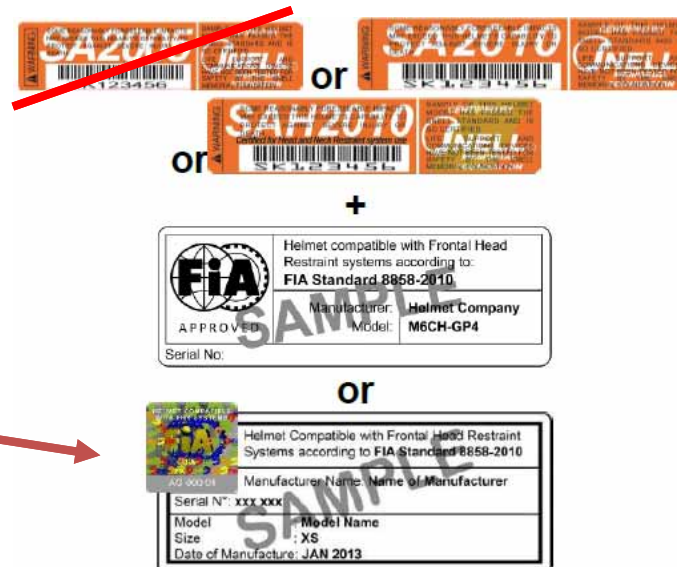
The conditions of use are important: no cameras attached or accessories not approved, no modifications. Decoration according to the recommendation of the manufacturer

□ WHAT LABELS ?

- 8858-2002
 - TL n°41
 - Validity date = SNELL validity
 - Both SNELL and FIA labels mandatory



- 8858-2010
 - TL n°41
 - Validity date = SNELL validity
 - Both SNELL and FIA labels mandatory
 - New labelling from 01.01.2013



□ WHAT LABELS ?

- 8859-2015
 - TL n°49



- 8860-2004
 - TL n°33



- 8860-2010
 - TL n°33
 - New labelling from 01.01.2013

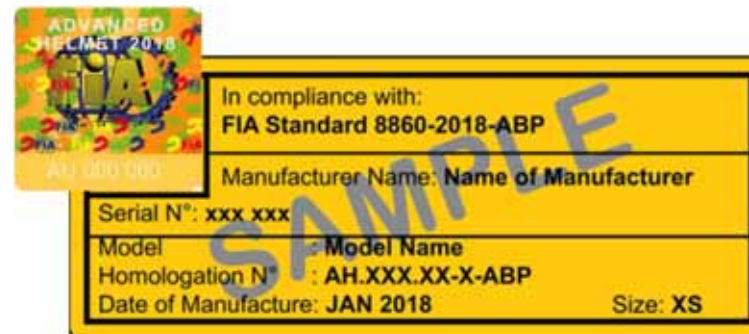


□ WHAT LABELS ?

- 8860-2018
 - TL n°69
 - Validity date = TBD



- 8860-2018-**ABP**
 - TL n°69
 - Validity date = TBD
 - **Specific** Yellow label
 - **Specific** Homologation number



**NOT VALID AFTER
31.12.2013**












**NOT VALID AFTER
31.12.2014**



FIA

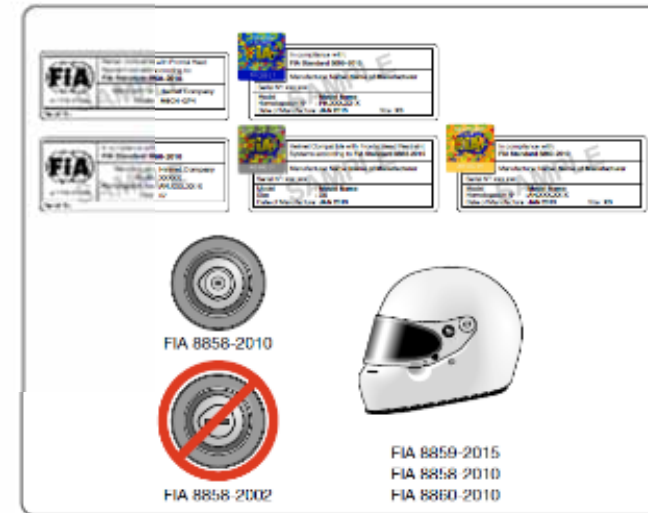
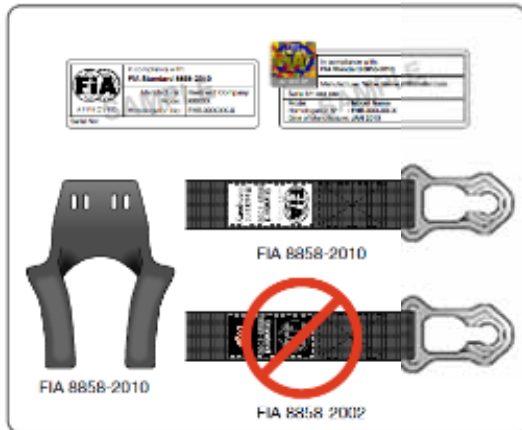
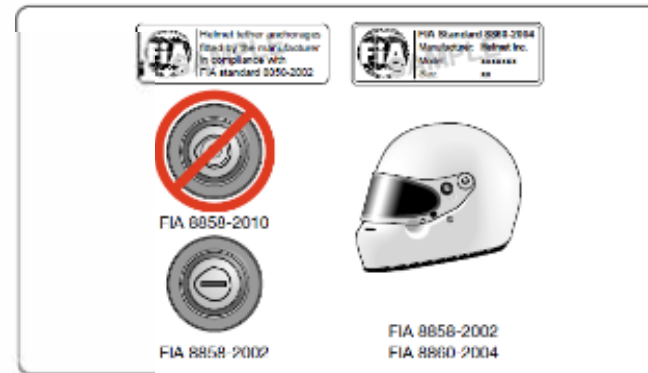
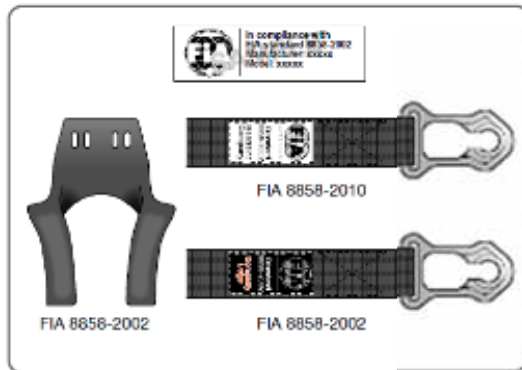
Liste N° 25

STANDARD DESIGNATION	LABEL EXAMPLE	Recognised to be used with FHR ¹	Recognised to be used without FHR
Snell SA-2005 NOT VALID AFTER 31.12.2018		NO	YES
Snell SA2005 + FIA-8858-2002 NOT VALID AFTER 31.12.2018	 + 	YES	YES
Snell SA2005 + FIA-8858-2010 NOT VALID AFTER 31.12.2018	 + 	YES	YES
Snell SA2005 ± FIA-8858-2010 NOT VALID AFTER 31.12.2018	 + 	YES	YES
SFI-31.1 SFI-31.1A SFI-31.2A SFI Foundation Inc 15708 Pomona Road, Suite N208 Poway, CA 92009 USA www.sfi.foundation.com NOT VALID AFTER 31.12.2018	 + 	NO	YES

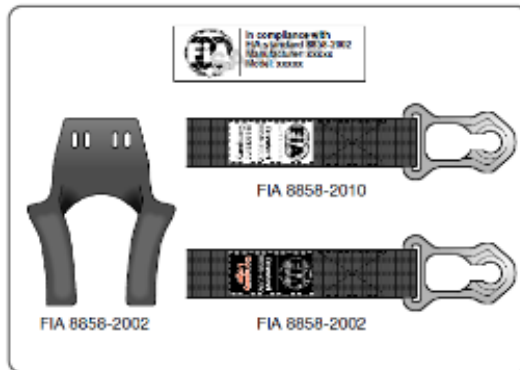
**NOT VALID AFTER
31.12.2018**



□ Appendix L – Chapter III – article 3.3

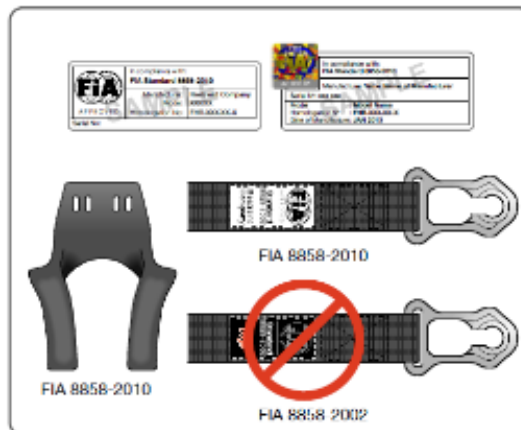


□ Appendix L – Chapter III – article 3.3



□ STEP 1 – CHECK TETHERS

- 8858-2002 HANS => can have all tethers
 - « old » tethers 8858-2002
 - « new » tethers 8858-2010

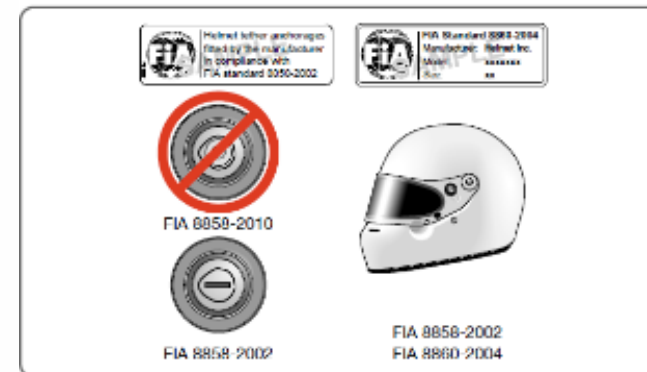


- 8858-2010 HANS => can only have « new » tethers
 - ~~« old » tethers 8858-2002~~
 - « new » tethers 8858-2010

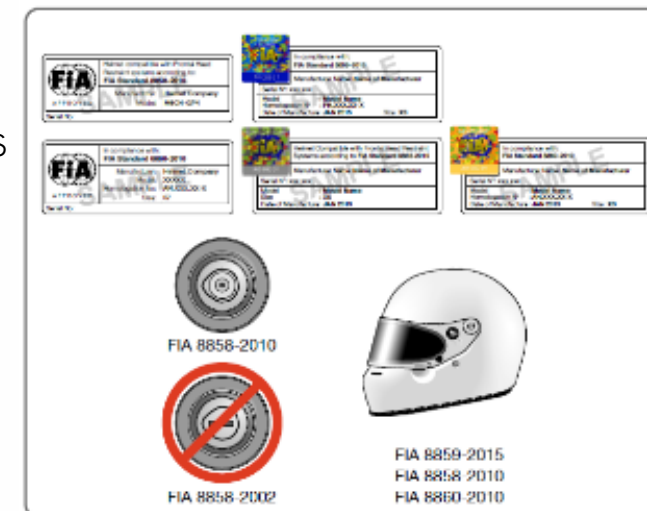
□ Appendix L – Chapter III – article 3.3

□ STEP 2 – CHECK HELMET ANCHORAGE

- 8858-2002 anchorage => only on « old » helmets
 - 8858-2002 helmets
 - 8860-2004 helmets



- 8858-2010 anchorage => only on « new » helmets
 - 8858-2010 helmets
 - 8859-2015 helmets
 - 8860-2010 helmets
 - 8860-2018 helmets



All drivers and co-drivers must wear overalls as well as gloves (optional for co-drivers), long underwear, a balaclava, socks and shoes homologated to the FIA 8856-2000 standard (Technical List No 27) or FIA 8856-2018 standard (Technical List No 74).

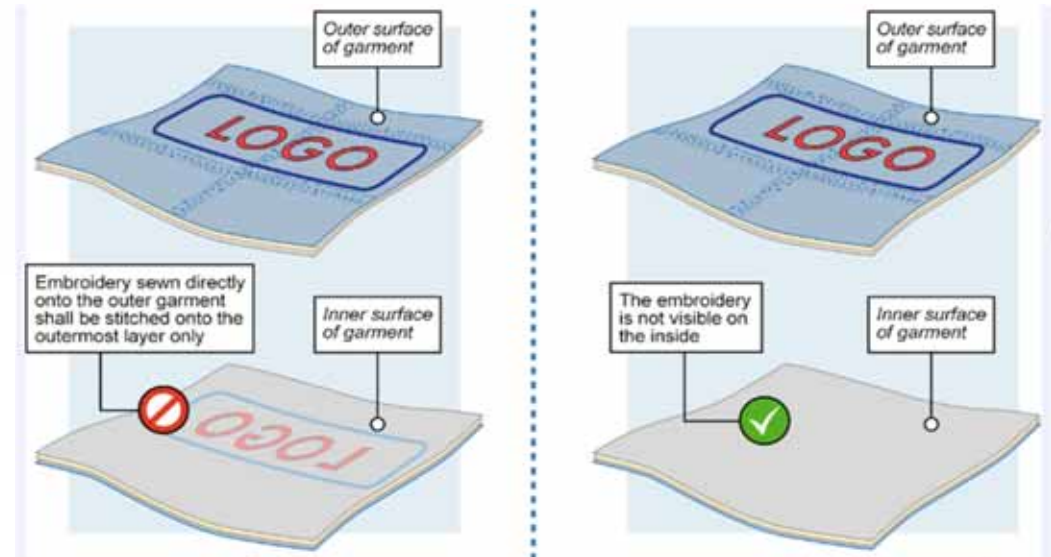
- Overalls
- Long underwear (shirt and pants), balaclava and socks
- Shoes
- Gloves(optional for codrivers)

- FIA standards:
 - FIA standard 8856-2000 (TL 27)
 - FIA standard 8856-2018 (TL 74) **(compulsory for P1 drivers since 01/01/2020)**

Article 2

Embroidery sewn directly onto the overalls shall be stitched onto the outermost layer only, for better heat insulation. Backing material of badges and thread used for affixing them to the overalls must be flameproof. The stitching of badges can go through all the layers, provided that the thread is flameproof and compliant with ISO 15025. Printing or transfers on drivers' clothing must be carried out only by the manufacturer of the product and must not reduce the performance of the suit as defined in the 8856-2000 or 8856-2018 standard. (see Appendix 1 of the FIA 8856-2000 Standard or Appendix F of the FIA 8856-2018 Standard for detailed

requirements and instructions for use). Any FIA-approved 8856-2018 garment customised using printing or transfers must be accompanied by a certificate from the manufacturer.



Only compulsory for the new 8856-2018 standard



(L'en-tête de la société doit être utilisé pour ce certificat)
(The letterhead of the company shall be used for this certificate)

CERTIFICAT POUR LA PERSONNALISATION DE VÊTEMENTS AU MOYEN DE TRANSFERTS OU D'IMPRESSIIONS (NORME FIA 8856-2018)
CERTIFICATE FOR CUSTOMISATION OF GARMENTS BASED ON TRANSFERS OR PRINTING (FIA STANDARD 8856-2018)

N° d'Homologation
Homologation N°

Date du Certificat
Certificate Date

1. FABRICANT ET MODÈLE / MANUFACTURER AND MODEL

A1) Fabricant :
Manufacturer:

Click or tap here to enter text.

A2) Nom du modèle :
Model Name

Click or tap here to enter text.

A3) Numéros des hologrammes FIA des vêtements où cette personnalisation a été appliquée
FIA hologram numbers of the garments where this customisation was applied

Tape the number.	Tape the number.	Tape the number.	Tape the number.	Tape the number.
Tape the number.	Tape the number.	Tape the number.	Tape the number.	Tape the number.
Tape the number.	Tape the number.	Tape the number.	Tape the number.	Tape the number.
Tape the number.	Tape the number.	Tape the number.	Tape the number.	Tape the number.
Tape the number.	Tape the number.	Tape the number.	Tape the number.	Tape the number.
Tape the number.	Tape the number.	Tape the number.	Tape the number.	Tape the number.
Tape the number.	Tape the number.	Tape the number.	Tape the number.	Tape the number.

2. PHOTOS OU ILLUSTRATIONS DU VÊTEMENT AVEC LA PERSONNALISATION / PHOTOS OR ARTWORK OF THE GARMENT WITH THE CUSTOMISATION

A1) Vue avant
Front View



A2) Vue arrière
Back View



□ Article 2

Substances which may circulate in any cooling system worn by a driver are restricted to water, or air at atmospheric pressure. Water systems must not require the saturation of a garment in order to function. For competitions taking place in extreme heat, it is recommended that a cooling system be used (connected, for example, to the underwear designed for that purpose and homologated according to the FIA 8856-2000 standard or to the FIA 8856-2018 standard).



□ Labelling

8856-2000 (TL27)

8856-2018 (TL74)

OVERALLS



Only valid for overalls
manufactured before
01.01.2013



□ Labelling

TOP AND BOTOM UNDERWEAR, BALACLAVA

8856-2000 (TL27)

In compliance with FIA
standard 8856-2000
Manufacturer name

Only valid for underwear
manufactured before
01.01.2016

In compliance with FIA
Standard 8856-2000
Manufacturer name
Year of manufacture: 2016



8856-2018 (TL74)

In compliance with:
FIA Standard 8856-2018

Manufacturer name:
Name of manufacturer




Homologation N°: DC.XXX.XX-X
Not valid after: 20XX



□ Labelling

	8856-2000 (TL27)	8856-2018 (TL74)
SOCKS	<p>In compliance with FIA standard 8856-2000 Manufacturer name</p> <p>NO HOLOGRAM</p>	<p>In compliance with: FIA Standard 8856-2018</p> <p>Manufacturer name: Name of manufacturer</p> <p>Homologation N°: DC.XXX.XX-X Not valid after: 20XX</p> <p>NO HOLOGRAM</p>

□ Labelling

	8856-2000 (TL27)	8856-2018 (TL74)
GLOVES	<div style="display: flex; flex-direction: column; align-items: flex-start;"> <div style="border: 1px solid black; padding: 5px; margin-bottom: 10px;"> In compliance with FIA standard 8856-2000 Manufacturer name </div> <div style="color: red; font-weight: bold; margin-bottom: 10px;"> Only valid for underwear manufactured before 01.01.2016 </div> <div style="display: flex; align-items: center;"> <div style="border: 1px solid black; padding: 5px; margin-right: 10px;"> In compliance with FIA Standard 8856-2000 Manufacturer name Year of manufacture: 2016 </div> <div style="font-size: 2em; margin-right: 10px;">+</div> <div style="border: 1px solid black; padding: 5px;">  </div> </div> </div>	<div style="display: flex; align-items: center;"> <div style="border: 1px solid black; padding: 10px; margin-right: 20px;"> In compliance with: FIA Standard 8856-2018 <hr/> Manufacturer name: Name of manufacturer <hr/> Homologation N°: DC.XXX.XX-X Not valid after: 20XX </div> <div style="font-size: 2em; margin-right: 10px;">+</div> <div style="border: 1px dashed black; padding: 5px;">  </div> </div>
		

❑ Labelling

8856-2000 (TL27)

8856-2018 (TL74)

SHOES

In compliance with FIA
standard 8856-2000
Manufacturer name

Only valid for underwear
manufactured before
01.01.2016

In compliance with FIA
Standard 8856-2000
Manufacturer name
Year of manufacture: 2016



In compliance with:
FIA Standard 8856-2018

Manufacturer name:
Name of manufacturer

Homologation N°: DC.XXX.XX-X
Not valid after: 20XX



❑ Labelling

	8856-2000 (TL27)	8856-2018 (TL74)
OTHER PRODUCTS: Pijamas Rain proof overgarments Cooling undergarments	<div data-bbox="524 571 763 708"> <p>In compliance with FIA standard 8856-2000 Manufacturer name</p> </div> <div data-bbox="801 579 1182 703"> <p>Only valid for underwear manufactured before 01.01.2016</p> </div> <div data-bbox="524 730 763 890"> <p>In compliance with FIA Standard 8856-2000 Manufacturer name Year of manufacture: 2016</p> </div> <div data-bbox="846 775 958 871"> </div>	<div data-bbox="1429 600 1794 868"> <p>In compliance with: FIA Standard 8856-2018</p> <hr/> <p>Manufacturer name: Name of manufacturer</p> <hr/> <p>Homologation N°: DC.XXX.XX-X Not valid after: 20XX</p> </div> <div data-bbox="1890 647 2092 804"> </div>

Hand cutting or modification of the specified tread pattern is not permitted for GRAVEL & TARMAC

NOT ALLOWED



2019 List of Asphalt Eligible Tyres

	Page 2
	Page 13
	Page 25
	Page 32
	Page 37
	Page 43
	Page 50
	Page 54
	Page 56

Tread patterns for tarmac tyres must be homologated by FIA

List of homologated tread patterns is available on the FIA Website

FIA Tyre barcodes are compulsory for ALL CARS and for ALL COMPETITORS

13.1.4 Barcode number

Each tyre must have either:

- Two identical moulded barcode numbers (one on each side of the tyre / each barcode having a different colour as defined by the FIA) supplied by the 2020 FIA-approved barcode supplier, or:
- A single moulded barcode number supplied by the 2020 FIA-approved barcode supplier.

These barcodes will be used to check that the same tyres remain fitted to a particular car between tyre changes and that competitors are not exceeding the maximum quantities allowed. The tyre barcode must always be visible from outside the car.

Rally2 cars:
Article 261-801:
At least one spare wheel is compulsory.

Type	
- Single barcodes:	
- Double barcodes:	



SCAN ONLY FIA BARCODE



**WRC: NO TEAM PERSONNEL
ALLOWED IN REFUEL ZONE**

TYPES OF FUEL

62.1 TYPES OF FUEL

62.1.1 All P1, P2, P3 and P4 drivers must use FIA fuel as provided by the FIA-appointed supplier.

62.1.2 Unless otherwise detailed in the rally supplementary regulations, **RGT and non-priority drivers may use commercially available pump fuel. This fuel must be dispensed directly into the competing car from pumps at filling stations** or from organiser distribution points which are marked in the road book.

REFUEL COUPLINGS

62.3.7 Cars equipped solely with FIA specified refuel couplings and using fuel as per Art. 61.1.2 **must transport the adaptor in the car and show it at pre-event scrutineering.**

Procedure:

61.2.3 The relevant personnel must be wearing clothing which will provide adequate protection against fire.

61.2.6 Engines must be switched off throughout the refuelling operation.

61.2.7 The use of mobile phones and radio communication is forbidden while in a RZ.

61.2.9 A car may be pushed out of the RZ by the crew, and/or officials without incurring a penalty.

61.2 PROCEDURE IN RZ

61.2.1 Only actions inside an RZ directly involved in the refuelling of the competing vehicle are permitted.

61.2.2 In all RZs, a 5 kph speed limit will apply.

61.2.3 The relevant personnel must be wearing clothing which will provide adequate protection against fire.

61.2.4 The fuel supplier or the organiser, whoever is responsible for running the refuel zone, is responsible to protect the ground with an Environmental Mat which shall be composed of an absorbent upper part and an impermeable lower part.

61.2.5 The responsibility for refuelling is incumbent on the competitor alone.

61.2.6 Engines must be switched off throughout the refuelling operation.

61.2.7 It is recommended that the crew remain outside the car during refuelling; however, should they remain inside, their safety belts must be unfastened.

61.2.8 Solely for the purpose of assisting with the refuelling procedure of their car, two team members of each crew may access the RZ.



- 34.1.5** On a road section that is a public road and at the start of a stage, a competition car may only be driven on four freely rotating wheels and tyres. Any car not complying with this article will be considered as retired as per WRC Art.54. An additional penalty may be imposed by the stewards.



ANY QUESTIONS ?



SCRUTINEERING:

- 1) GENERAL INFORMATION
- 2) CHECKING OF THE RALLY CARS
- 3) SAFETY EQUIPMENT / CREW
- 4) SEALING OF PARTS
- 5) VARIOUS CHECKS
- 6) QUESTIONS



Information concerning scrutineering is strictly confidential:

- No scrutineering information to journalists
- No scrutineering information & photos to be published on social networks (facebook / twitter ...)



2020 WRC & RRC SPORTING REGULATIONS STATES:
APPENDIX III — SAFETY

5.2.7 Officials and marshals

Organisers should ensure that, in performing their duties, officials are not required to place themselves in danger. It is the organiser's responsibility to ensure that officials are adequately trained in this regard.

The personnel should wear identifying tabards. The recommended colours are:

- Safety Marshals: Orange
- Safety Officer: Orange with white stripe and text
- Post Chief: Blue with white stripe and text
- Media: Green
- Stage Commander: Red with text
- Competitor Relations Officer: Red jacket or red tabard
- Medical: White
- Radio: Yellow with blue mark
- Scrutineer: Black





PRE-RALLY SCRUTINEERING / TYPICAL CHECKING FORM

- Please fill-up all rows
- Please write the standard number, if applicable
- Please sign the form and mark if car approved or not
- Form has to be signed also by team representative

2020 - CAR SCRUTINEERING SHEET

CAR NUMBER	<input type="text"/>	RALLY	<input type="text"/>
CAR MANUFACTURER	<input type="text"/>		
CAR MODEL	<input type="text"/>		
CLASS / Change of class (if applicable)	<input type="text"/>		



COCKPIT / ENGINE COMPARTMENT	OK	NOT OK	Number	Remarks	Solved
FIA HOMOLOGATION FORM <small>Original and complete</small>	<input type="checkbox"/>	<input type="checkbox"/>			
FIA PASSPORT <small>(Compulsory for WRC, RS, R-GT)</small>	<input type="checkbox"/>	<input type="checkbox"/>			
EXTERNAL CIRCUIT BREAKER <small>Test & sign (base 12cm)</small>	<input type="checkbox"/>	<input type="checkbox"/>			
SAFETY CAGE (homologated)	<input type="checkbox"/>	<input type="checkbox"/>	Extension number or certificate ↓		
Extension or certificate	<input type="checkbox"/>	<input type="checkbox"/>			
Other <small>Modified or damaged or improperly welded</small>	<input type="checkbox"/>	<input type="checkbox"/>			
SAFETY CAGE (Appendix J) <small>(Current Art. 253-B or Appendix J 253-B 2016)</small>	<input type="checkbox"/>	<input type="checkbox"/>			
SAFETY CAGE PADDING <small>Missing and/or not fitted properly (drawing 253-68)</small>	<input type="checkbox"/>	<input type="checkbox"/>			
	OK	NOT OK	Standard Number ↓	Remarks	Solved
SAFETY HARNESSSES (TL 24, 57) <small>(8853-2016 compulsory for WRC, RS, S2000, R-GT)</small>	<input type="checkbox"/>	<input type="checkbox"/>			
Seat belts buckles and fixation	<input type="checkbox"/>	<input type="checkbox"/>			
SEAT BELT CUTTER <small>(2 minimum easily accessible)</small>	<input type="checkbox"/>	<input type="checkbox"/>	Standard Number ↓		
SEATS (TL 12, 40) <small>(8862-2009 compulsory for WRC, RS, S2000 1.6L Turbo)</small>	<input type="checkbox"/>	<input type="checkbox"/>			
FIA foam VC (TL 58) <small>(Only for seat 8862-2009)</small>	<input type="checkbox"/>	<input type="checkbox"/>			
Cushions <small>(8855-1999 max 3 cm 8862-2009 see Appendix J)</small>	<input type="checkbox"/>	<input type="checkbox"/>			
In front of main rollbar	<input type="checkbox"/>	<input type="checkbox"/>			
SEAT SUPPORTS <small>Homologated or Appendix J (modified, damaged, spacers)</small>	<input type="checkbox"/>	<input type="checkbox"/>			

Windscreen / Rear window <small>Rear window: max 8cm on top</small>	<input type="checkbox"/>	<input type="checkbox"/>	<input type="checkbox"/>	Remarks	Solved
SEALING	<input type="checkbox"/>	<input type="checkbox"/>	<input type="checkbox"/>		
ENGINE BLOCK <small>All cars</small>	<input type="checkbox"/>	<input type="checkbox"/>	Seal number →		
TURBOCHARGER (AND SPARE) <small>All turbocharged cars (max. one spare)</small>	<input type="checkbox"/>	<input type="checkbox"/>	Seals number →		
TRANSMISSION FITTED ON CAR <small>All priority cars Non priority cars: see S.B.</small>	<input type="checkbox"/>	<input type="checkbox"/>	Seals number →		
SPARE TRANSMISSION <small>All priority cars Non priority cars: see S.B.</small>	<input type="checkbox"/>	<input type="checkbox"/>	Seals number →		
POP-OFF VALVE (TL 43) <small>All RS cars</small>	<input type="checkbox"/>	<input type="checkbox"/>	Pop-off number →		

TYRE	<input type="checkbox"/>	<input type="checkbox"/>	<input type="checkbox"/>	Remarks	Solved
TYRE MAKE NOMINATION <small>All WRC cars All WRC2 & All WRC3 cars All 2WD Priority cars</small>	<input type="text"/>				

DRIVER/CODRIVER EQUIPMENT	<input type="checkbox"/>	<input type="checkbox"/>	<input type="checkbox"/>	Remarks	Solved
COMPLY WITH APPENDIX L	<input type="checkbox"/>	<input type="checkbox"/>	<input type="checkbox"/>		

Additional Notes: _____

DATE: / / CAR APPROVED **YES** **NO**

SCRUTINEER (name & signature) TEAM REPRESENTATIVE (name & signature)

RE-SCRUTINY

DATE: / / CAR APPROVED **YES** **NO**

SCRUTINEER (name & signature)

Make sure that cars are ready for scrutineering

- Check sump guards, protections are dismantled
- Check turbocompressors are ready to seal
- Check engine block is ready to seal
- Check transmission is ready to seal (if required)
- **turn back if required (no wire for sealing, no hole for sealing etc ...)**
=> otherwise will just delay scrutineering !

Check that car is complying with Photo A and Photo B of Homologation form



Required documents for pre-event scrutineering for every cars / competitors

FIA Homologation form of the car

Bodyshell certificate for WRC / Rally2 / S2000-R

- + Safety cage homologation document (for cars fitted with FIA & ASN homologated safety cage)
- + Catalytic converter homologation certificate (if not standard ...)

If some documents are missing or are not certified copies



Report to FIA staff



Safety cage Certificate Checking (ASN or FIA homologation)

- 1) **ASN original certificate or FIA homologation form must be presented to the scrutineers at pre-rally scrutineering.**
- 2) **Scrutineers must check that Safety cage fitted in the car and homologation document (photos / drawings) are 100% identical**
- 3) **Non Homologated modification ⇒ ROLL CAGE IS NOT ACCEPTABLE**

Article 253 / Appendix J:

Any modification to a homologated or certified safety cage is forbidden.

To be considered as a modification, any process made to the cage by machining, welding, that involves a permanent modification of the material or the safety cage.

All repairs to a homologated or certified safety cage, damaged after an accident must be carried out by the manufacturer of the cage or with his approval.

ASN Safety cage certificate

MSA REF. NO:

Addendum page for ROPS supplied in kit form

A. Certificate by kit supplier

I/we certify that the kit supplied by:

O.M.P. Racing s.r.l. (company name) is:

~~a. Designed to meet FIAMSA requirements or~~
b. Designed to meet the specification of the customer who accepts responsibility for compliance with FIAMSA requirements.
(delete as appropriate)

Signature: Name: **O.M.P. RACING s.r.l.**
Via E. Buzzati, n. 5
16019 RONCO SCRIVIA (Grosseto)
Partita IVA: 02744760105

Address: Via E. Buzzati, 5 16019 Ronco Scivria (GE) Italy
.....
.....

Tel No: 0039 010 9650... Fax No: 0039 010 935378...
E-mail: omp.info@ompracing.it

B. Certificate by Installer

I/we certify that we have read the requirements of the FIAMSA in regard of ROPS installation requirements and that the supplied kit will be installed in accordance with these regulations and any other instructions provided by the kit manufacturer.

Company name:
Signature: Name:
Address:
.....
.....

Tel No: Fax No:
E-mail:

Attention
Certificate must be filled-in
& signed by Installer

WRONG

Welding :

- For all safety cages, weldings must checked carefully:

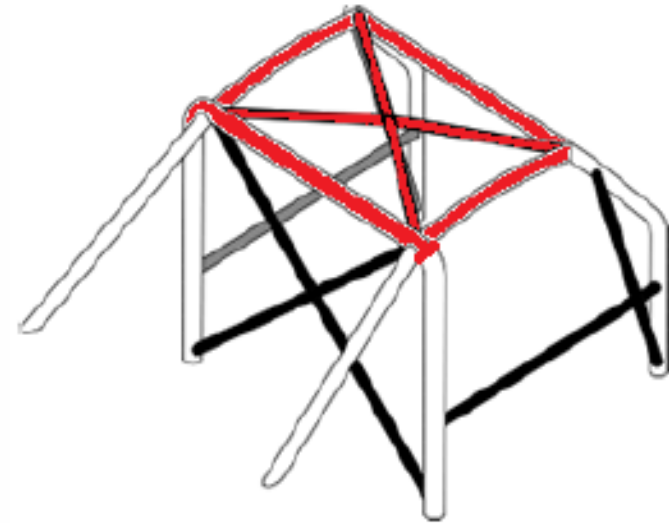
Weldings must be carried out along the whole perimeter of the tube.

- Check also carefully seat belts tubes



Safety cage protective padding / For all categories

- Where the occupants' bodies could come into contact with the safety cage, flame retardant padding must be provided for protection.
- **All tubes of the cage identified on Drawing 253-68 and all roof reinforcements must be fitted with paddings** in compliance with FIA standard 8857-2001 type A (see Technical List n°23).
- Each padding must be fixed in such a way that it is not moveable from the tube => **Not turning around safety cage !**



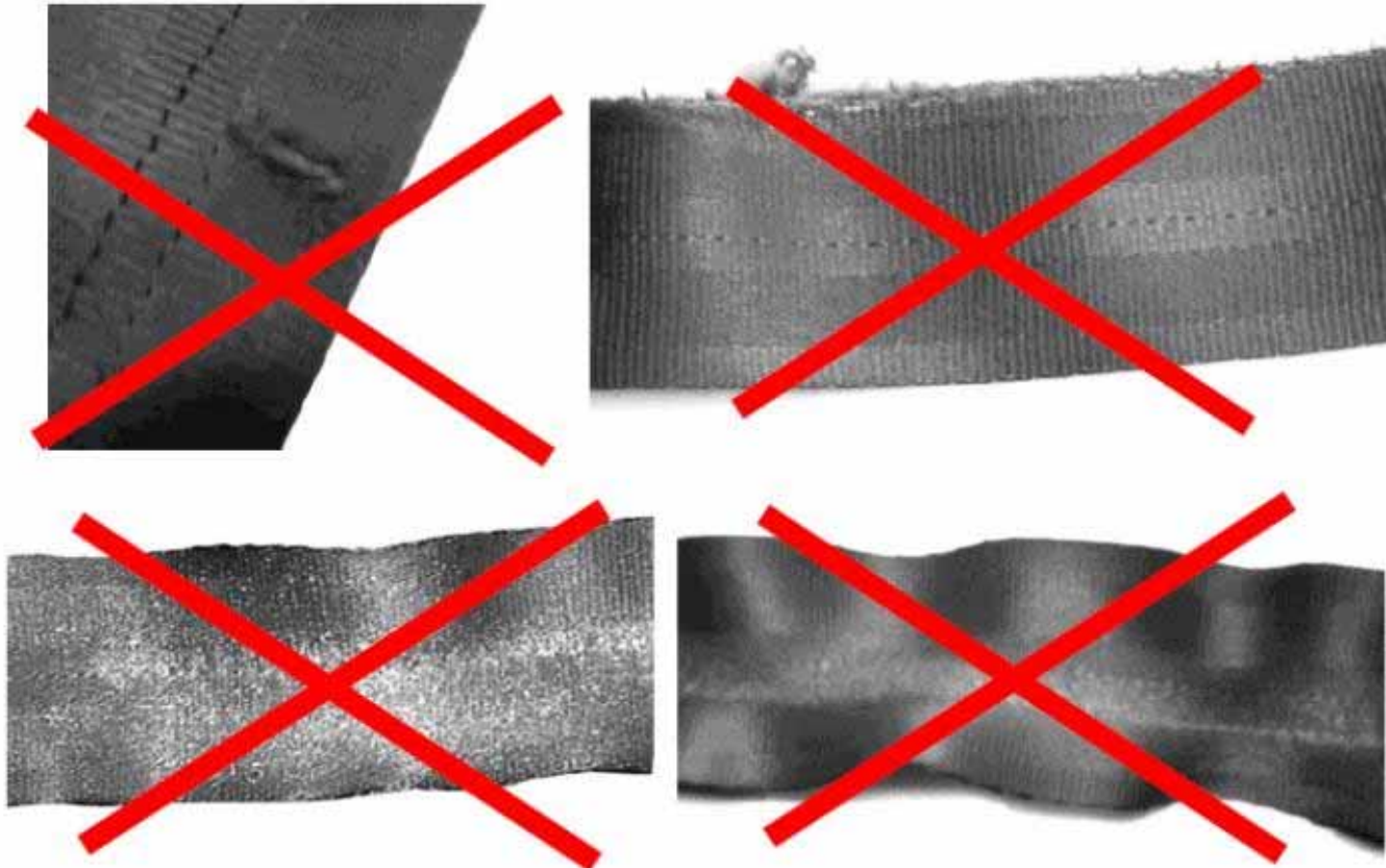

CORRECT



Be careful with harness condition

Signs of wear or damaged harness:

- Car may be rejected during scrutineering
- **Reduced protection**



Cut and Abrasion as shown here require an immediate belt exchange

- Validity stated in label (each part)
 - Not valid after ... -is a last year to use
 - Inspect for stretching and damages, no structural modifications!

Elastic devices attached to the shoulder straps are forbidden.

WRONG !



Damaged seat belts



HOLOGRAPHIC MISSING



Modified seat belts



WRONG !



Safety harnesses fitted to safety cage:

Appendix J states:

In this case, the use of a transverse reinforcement is subject to the following conditions :

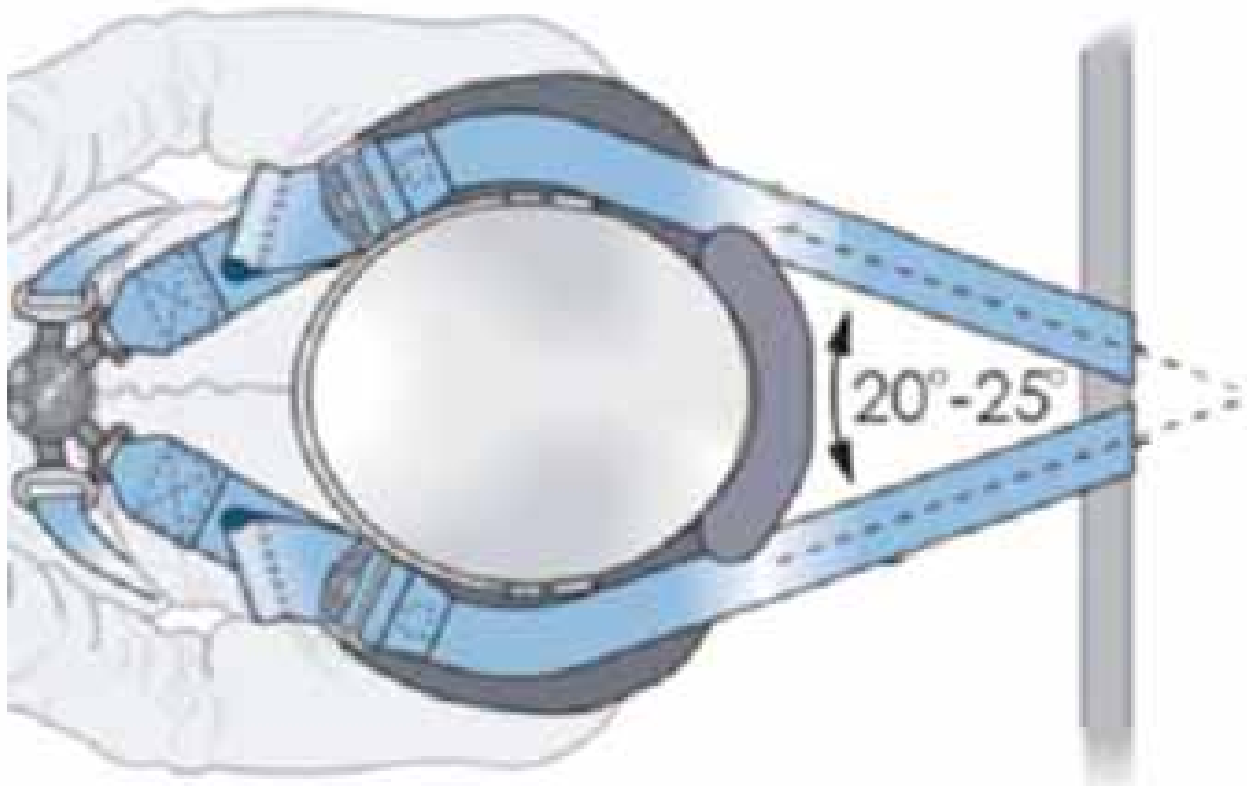
- **The transverse reinforcement must be a tube measuring at least 38 mm x 2.5 mm or 40 mm x 2 mm, made from cold drawn seamless carbon steel, with a minimum tensile strength of 350 N/mm²**
- The height of this reinforcement must be such that the shoulder straps, towards the rear, are directed downward with an angle of between 10° and 45° to the horizontal from the rim of the backrest, an angle of 10° being recommended
- The straps may be attached by looping or by screws, but in the latter case an insert must be welded for each mounting point (see Drawing 253-67 for the dimensions).



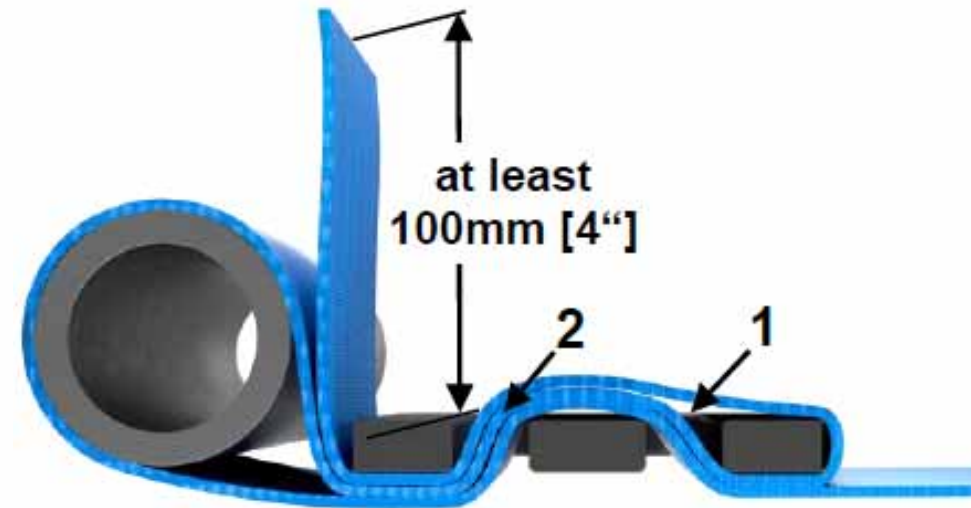
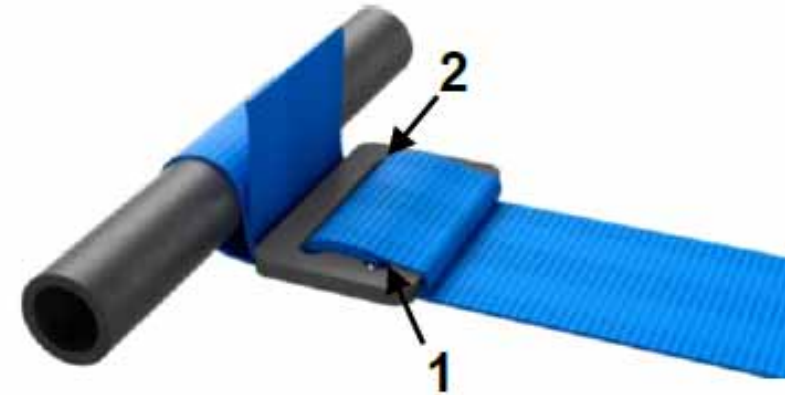
Shoulder belts MUST be **convergent**

=> enable FHR to work and protect efficiently

If **divergent** => FHR may not protect the neck



Attachment – 3-bar adjuster



2 Seat Belts cutters are compulsory



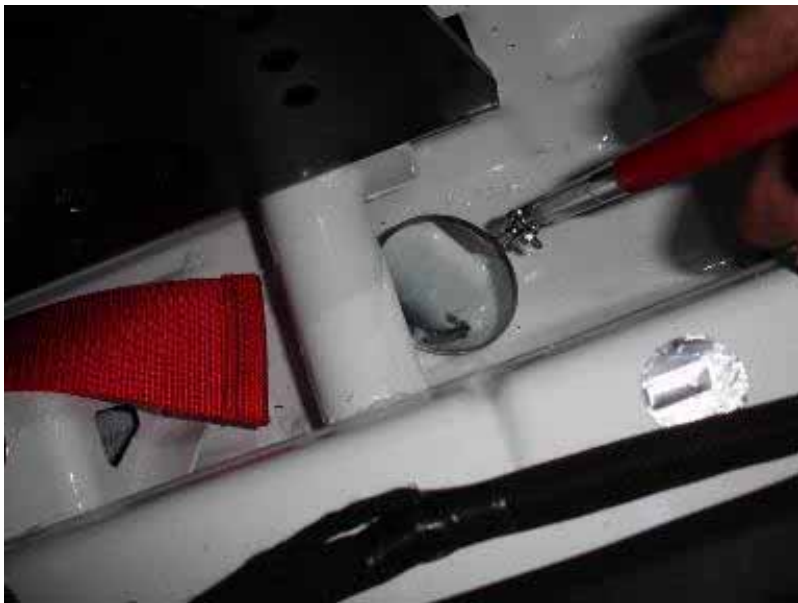
For rallies, **two belt cutters** must be carried on board at all times. They must be easily accessible for the driver and co-driver when seated with their harnesses fastened.

Welding :

- Must be carried out along the whole perimeter of the tube.

Damages:

- Check if not damaged / bended



WRONG / WELDING



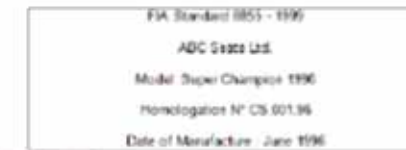
WRONG / DAMAGED & MODIFIED



**NON VALABLE APRES LE 31.12.2016
NOT VALID AFTER 31.12.2016**

**NOUVELLE ETIQUETTE EN VIGUEUR A
COMPTER DU 01.01.2012 JUSQU'AU 31.12.2013
NEW LABEL IN EFFECT FROM 01.01.2012
UNTIL 31.12.2013**

**NOUVELLE ETIQUETTE EN VIGUEUR A
COMPTER DU 01.01.2014
NEW LABEL IN EFFECT AS OF 01.01.2014**



LISTE TECHNIQUE N° 12 / TECHNICAL LIST N° 12

Homologation / Homologation

CS.145.05	BELT & BUCKLE SABELT	RACER DUO	Latéraux ou inférieurs Lateral or Lower		10.05	10.17	12.22
CS.146.05	OMP	HTE CARBON	Latéraux Lateral	✓	11.05	11.22	12.27
CS.147.05	BELT & BUCKLE SABELT	CH-F	Latéraux Lateral		11.05	11.17	12.22

For WRC 2017 / Rally2 / Rally4/5 / R1/R2/R3 cars using 8862-2009 seats

Seats :

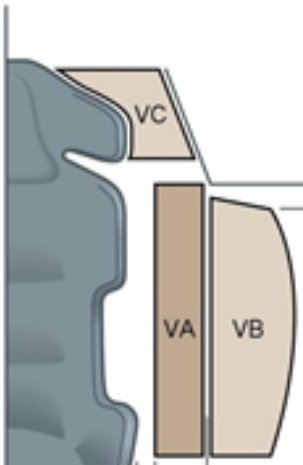
Only seats of Type FIA 8862-2009 are authorised.

The material of the driver's and co-driver's seats is free but the weight of the bare shell (seat without foam or supports) must be greater than 7 kg.

FIA-specified foam (see Technical List n°58) must fill the entire volume defined by the lateral area of the seat side head support, projected outwards in a transverse direction to the side glazing or B-pillar (Volume V_C).

Where Volume V_C occupies space filled in with foam (see Art. 901-access10) between the outside surface of the seat and the inside of the door, Volume V_C takes priority.

Volume V_C must be fixed onto the seat side head support with Velcro only.

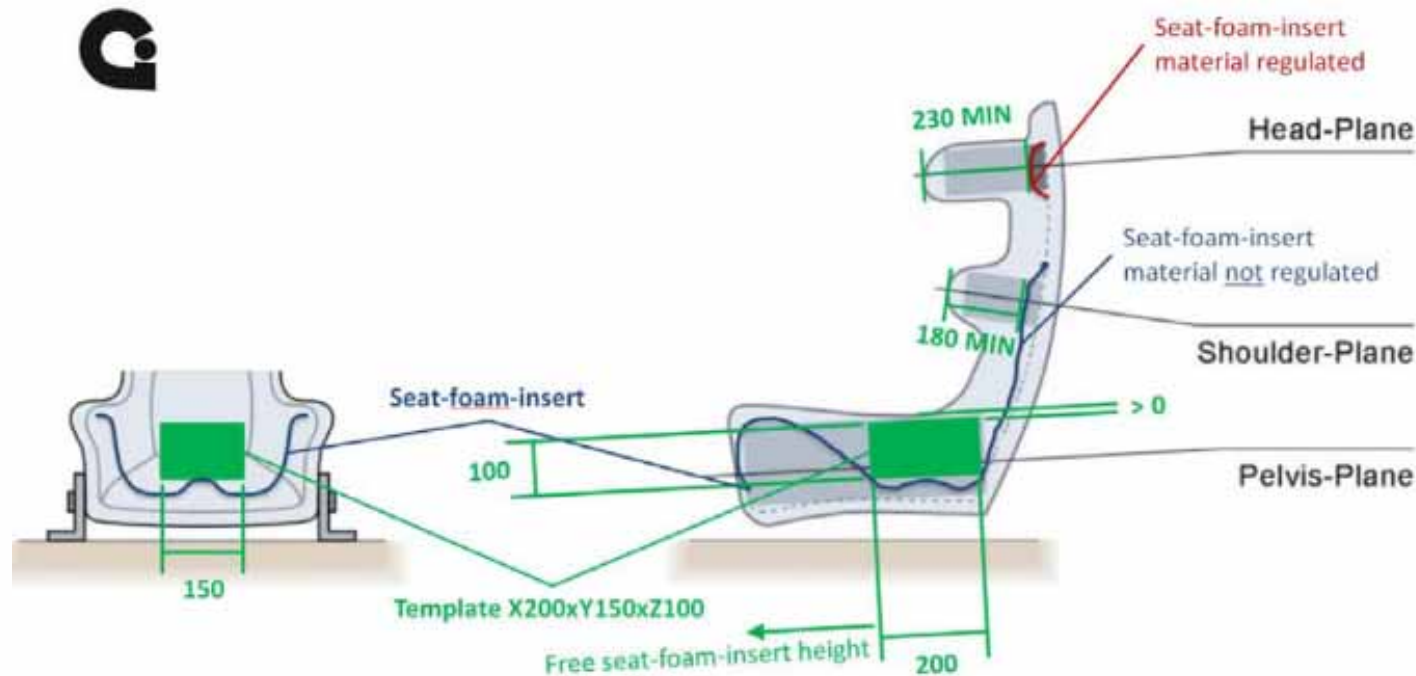


WRONG FIXINGS



FIA Approved 8862-2009 seats

If a foam insert is used between the homologated seat and the driver, minimum lateral support to the driver's head, shoulders and pelvis must be guaranteed as follows :



FIA Approved 8855-1999 seats

If there is a **cushion** between the homologated seat and the occupant, the **maximum thickness of this cushion is 50 mm**



WRONG !

Must be in front of main rollbar



WRONG

**Take care for small cars
Codriver side !**

Inspection period for bottle is max. 2 years

E-sign outside (at least 10 cm diameter with a red edge) + Switch

It is important to carry out systematically the electrical box checks at pre-rally scrutineering



This also refers to inspection of the bottle / All information must be clearly visible at scrutineering



Bottle mounted well (25 g...)

Metallic mounting (2 straps minimum) quick-release

Minimum of 2 screw-locked
metallic straps



Anti-torpedo tabs are required



If any doubt scrutineers must refer to the homologation form of the mounted system (number of nozzles for engine / cockpit / maintenance etc ...)

Extinguishing system

✓

✗

✓

✓

✓

Hand held Extinguisher

✓

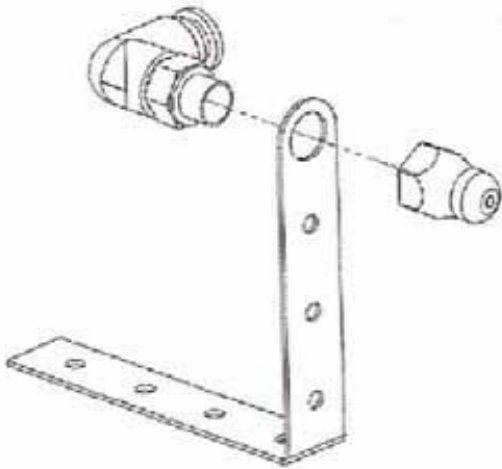
✓

✗

✓

✗

Fixings of nozzles



Sabelt nozzles are designed so that they can be mounted through a bulkhead or to a specially made bracket. Nozzles should be mechanically secured in position and not simply supported by their own pipework. Plastic tie wraps are not recommended for this purpose.

WRONG



Some of the extinguisher systems use gas as an extinguishing medium, and the pressure inside the bottle fluctuates according to the temperature. Therefore, it is important to read the pressure gauge carefully. The following images cover all the cases that scrutineers may come across and provide clear guidance on how to interpret the readings.



Extinguisher systems with a pressure gauge showing the above readings shall be considered OK.

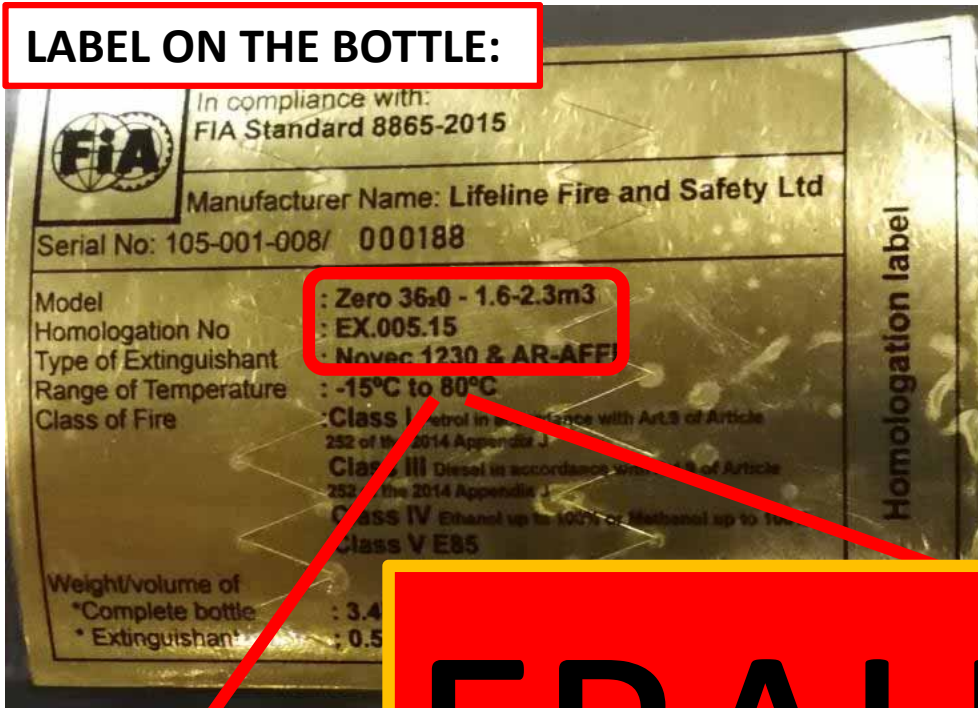


Extinguisher systems with a pressure gauge showing the above readings shall be considered NOT OK.

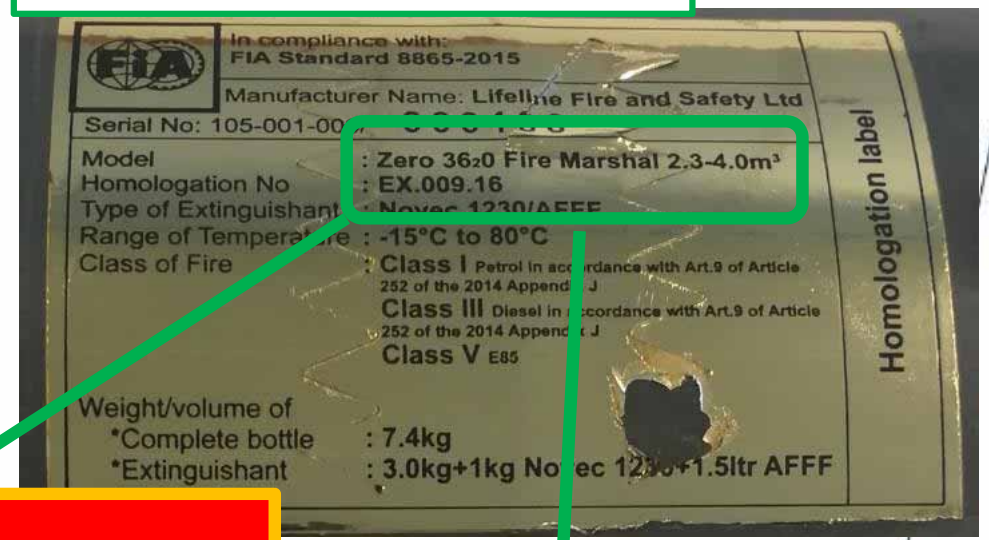


EXAMPLE OF FAKE EXTINGUISHER

LABEL ON THE BOTTLE:

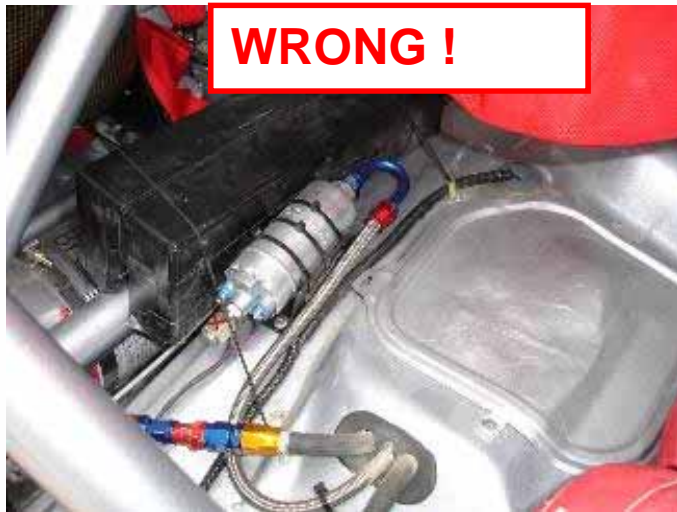


ORIGINAL LABEL UNDER FAKE:



FRAUD !

EX.005.15	Lifeline Safety Ltd			Class I / Class I Class II / Class II Class III / Class III Class IV / Class IV	2	11.12.2015	31.12.2020
EX.006.16	SPA Design		From 2.3 to 4.1 m³	Class V-E85 / Class V - E85	2	12.10.2016	31.10.2021
EX.007.16	SPA Design	XTREME-X	De 2.3 à 4.1 m³ From 2.3 to 4.1 m³	Classe I / Class I Classe II / Class II Classe V-E85 / Class V - E85	2	12.10.2016	31.10.2021
EX.008.16	Fire Extinguisher Valve Co. Ltd	FX G-TEC3300R	De 2.8 à 4.1 m³ From 2.8 to 4.1 m³	Classe I / Class I	1	19.10.2016	31.10.2021
EX.009.16	Lifeline Fire and Safety Ltd	Zero 36 ₂ O Fire Marshal - 2.3-4.03 m³	De 2.39 à 4.1 m³ From 2.39 to 4.1 m³	Classe I / Class I Classe II / Class II Classe III / Class III Classe V-E85 / Class V - E85	1	05.12.2016	31.12.2021



Article 253 from Appendix J:

- Lines containing fuel or hydraulic fluid may pass through the cockpit, **but without any connectors inside except on the front and rear bulkheads according to Drawings 253-59 and 253-60**, and on the braking circuit and the clutch fluid circuit.



If brake fluid / clutch fluid tanks are fitted inside the cockpit, they must **be protected by a leakproof and flameproof cover.**

Article 253-13:

The general circuit breaker must cut all electrical circuits, battery, alternator or dynamo, lights, hooters, ignition, electrical controls, etc. and must also stop the engine.

...

As for the outside, the triggering system of the circuit breaker must compulsorily be situated at the lower part of the windscreen mountings for closed cars. It must be marked by a red spark in a white-edged blue triangle with a base of at least 12 cm.

This outside triggering system only concerns closed cars.

Application :

- Compulsory fitting for all cars taking part in speed races on circuits, in rallies or hill-climbs.
- The fitting is recommended for other competition

MUST BE CHECKED AT PRE-EVENT SCRUTINEERING FOR ALL CARS





WRONG



WRONG

Inside the cockpit, the passage of the following elements between the side members of the bodyshell and the safety cage is forbidden :

- * Electric cables
- * Lines carrying fluids (except windscreen washer fluid)
- * Lines of the extinguishing system

Article 253-4: Steering

The column adjusting system must be locked and must be operated only with tools.

Need to be checked mainly on (former) R1 cars / R2 cars

Steering column / Quick release



Compulsory for:

- 2017 WRC CARS
- WRC with extension number 300/01 WRC.
- Rally2 /Rally2-kit

It must consist of a flange concentric to the steering wheel axis, coloured yellow through anodisation or any other durable yellow coating, and installed on the steering column behind the steering wheel.

The release must be operated by pulling the flange along the steering wheel axis.



**=> NOT
ACCEPTABLE**

Sporting Regulations:

53.2.2 "SOS" / "OK" sign

Each competing car shall carry a red "SOS" sign and on the reverse a green "OK" sign measuring at least 42 cm x 29.7 cm (A3).



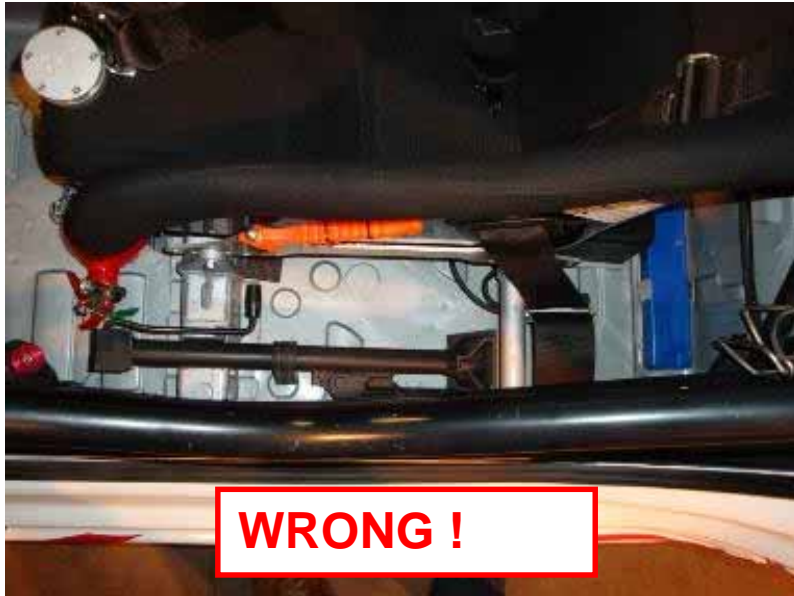
Need to be checked at pre-event scrutineering
and when competitors are applying for Re-Start



Sporting regulations:

53.2.3 Red Triangle / Each competing car must carry a red reflective triangle

Need to be checked at pre-event scrutineering and when competitors are applying for Re-Start



WRONG !

ARTICLE 252 from Appendix J:

- Only the following accessories may be installed in the cockpit: spare wheels, tools, spare parts, safety equipment, communication equipment, ballast (if permitted), windscreen washer water container (Touring Cars (Group A).
- **All spare parts and tools must be fixed either behind the driver's and/or co-driver's seats or underneath the driver's and/or co-driver's seats.**



WRONG !

Not allowed



ACCEPTED / PROMOTER CAMERA



WRC Sporting Regulations states:

18.1.5 The mountings of the cameras and recorders must be able to withstand a deceleration of 25 g. **Cameras must not be fitted between and/or on the side of driver or co-driver seats.**



WRONG



WRONG

Inboard camera must carry the Promoter Approval Sticker

7.7 Mud flaps (in Rallies only)

...

- In any case, transverse mud flaps are accepted under the following conditions:
- - They must be made of a flexible plastic material at least 4mm thick (minimum density = 0.85g/cm³).
- - They must be fitted to the bodywork.
-
- - The bottom of these mud flaps must be no more than 10 cm from the ground when the car is stopped, with nobody on board.
- - Above and over the entire height of the tyre, the entire width of the tyre must be covered (seen from behind)..

**COMPULSORY FOR GRAVEL
RALLYS ON ALL WHEELS**





Check that it's working at pre-rally scrutineering

Rear-view mirrors:

REAR VIEW

Rearward visibility must be ensured by two external rear-view mirrors (one on the right and one on the left). These rear-view mirrors may be as standard.

Each rear-view mirror must have a reflecting surface of at least 90 cm².

An inside rear-view mirror is optional.

Application :

Groups N, A, R (or Rally5/4/3/2), Super 2000 Rallies and WRC.

A cut-out (maximum surface 25 cm² per mirror) is authorised in the rear view mirror housing for cockpit ventilation.

The door may be modified at the mounting of the rear view mirror to make an equivalent cut-out of 25 cm² maximum.

Application :

Only in rallies, Groups N, A, R (or Rally5/4/3/2), Super 2000 Rallies and WRC.

Article 252 / Appendix J:

- If the original rear view mirrors incorporate direction indicators and if the article of Appendix J applicable to the vehicle permits the replacement of the rear view mirrors, the **direction indicators must be retained without necessarily being integrated in the rear view mirrors.**
- If the original rear view mirrors do not incorporate direction indicators, **direction indicators must be retained but they may be moved from their original position.**

- Windows' film

- The use of silvered or tinted films is authorised, on the rear side windows, on the rear window and on the sunroof, on the following conditions :

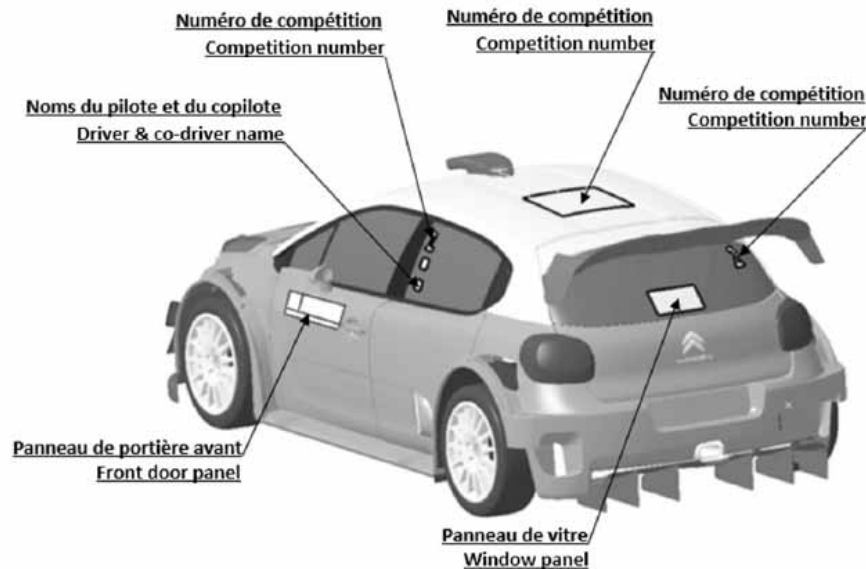
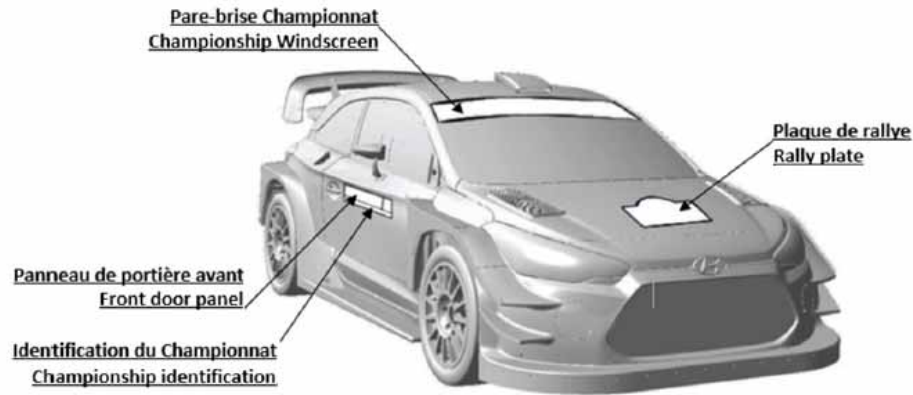
must have an opening equivalent to the surface of a circle of 70 mm in diameter so that the driver as well as the contents of the car may be seen from the outside.

- Otherwise transparent and colourless anti-shatter films on the side windows and the glass sunroof is mandatory (If not laminated glass)





COMPETITION NUMBERS AND ADVERTISING



See also supplementary regulations of the Rally

At pre-rally scrutineering / Area for checking crew equipment:

- must be separated from the area for checking cars => avoid delays !
- must be dedicated scrutineers for checking safety equipment for crew

All items for each driver & codriver must be shown / checked and recorded at pre-rally scrutineering (including spare helmets / spare FHR)

WRC:

specific sticker will be supplied by FIA Technical Delegate.

- Competitor number must be written on the sticker
- Stickers must be visible from outside the car

Helmet + FHR / Sticker:



Or specific holographic sticker for **P1 drivers** in WRC
List will be provided



2020 Driver / Codriver equipment				
Car n°	RALLYE			
	Manufacturer	Standart numb	Model	Type
Driver	Helmet			Jet Full
	FHR			
	Overall			
	Gloves			
	Balaclava			
	Top underwear			
	Boots			
	Socks			
	Pants			

	Manufacturer	Standart numb	Model	Type
CoDriver	Helmet			Jet Full
	FHR			
	Overall			
	Balaclava			
	Top underwear			
	Boots			
	Socks			
	Pants			

	Name <small>(Team representative)</small>	
	Signature <small>(Team representative)</small>	

After a severe accident (frontal or 45° angled with impact speed >50kph):
FHR must be carefully checked and discarded if any of the following is observed:

Deformation
or damage



Stretched tethers



Even if none of the above is observed the FHR tethers must be changed.
Helmet shall also be checked.



**ALL NOT
ACCEPTABLE**



➤ Damaged labels



➤ Check that helmet is not damaged



PROCEDURE: HELMET/ CHECKING

- Check type of Helmet
- Check helmet identification / homologation
- Check FHR anchorage
- Check if any damage on helmet

PROCEDURE: FHR / CHECKING

- Check type of FHR
- Check FHR identification / homologation
- Check FHR Tethers
- Check if any damage on FHR or Tethers

Appendix L – Check Compatibility Helmet / FHR

Camera / Helmets:

Not allowed



UNSAFE !

Shall be rejected:

- **Embroidery through 2 layers;**
- **Pocket inside overalls**





RS.192.10	R531	SPARCO	19.10.10	31.10.17
RS.193.10	RACESPEED RSN-200	TAIWAN RACING PRODUCTS	28.10.10	31.10.22
RS.194.10	ULTIMA	GMP	28.10.10	31.10.17

Driver and Codriver safety equipments will be checked as follows:

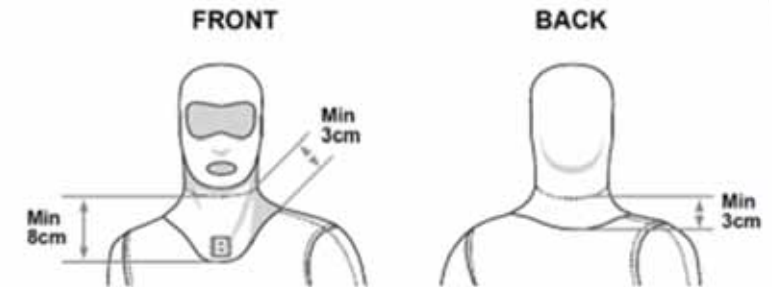
- Before start of the shakedown for all crews
- During the rally (usually after finish of SS)



Garments / Balaclava:

Users must ensure that garments are not too tight, as this reduces the level of protection. The balaclava must be worn under the racing suit. The neck, wrists and ankles shall always be covered by at least two articles of protective clothing. **The balaclava and top underwear shall overlap by a minimum of 3 cm around the driver's neck, except at the front central line where they shall overlap by at least 8 cm.** The upper and lower underwear shall overlap by a minimum of 7 cm around the waist of the driver ...

However, the use of synthetic, non-flameproof materials in contact with the driver's skin is not authorised.



Balaclava

MUST NOT be worn **ON TOP OF** the overall



Drivers must all wear **gloves**!

No **sleeves** rolled up!



Engine block sealing: **All competitors**

Turbocompressor: **All cars fitted with Turbocompressor: 1 turbo fitted on car + 1 Spare**

FIA Pop-off valve + INSERT: for **Rally2 cars ONLY** / must be checked and sealed

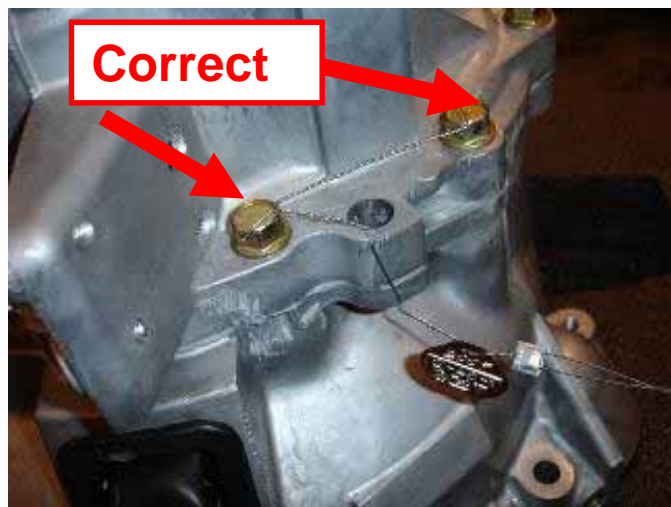
Transmission: **All FIA Priority Drivers**

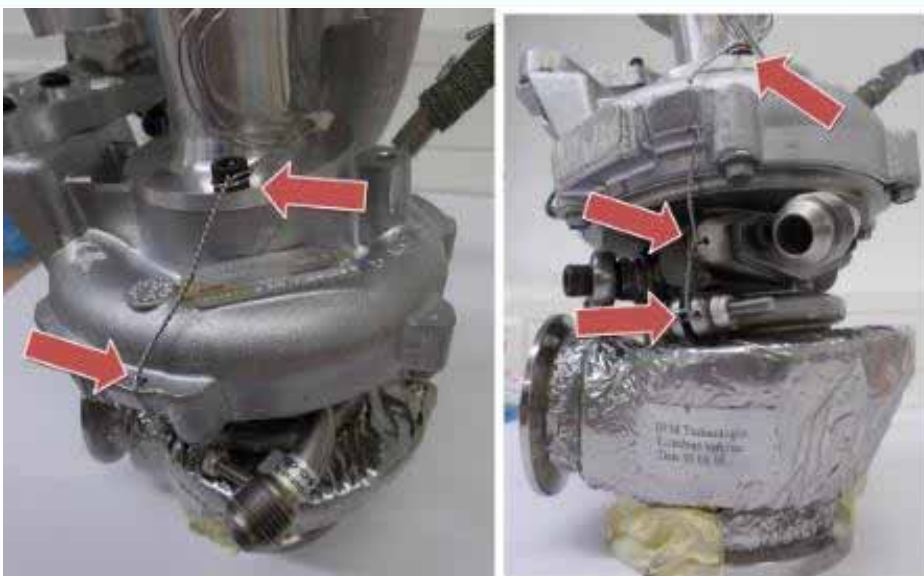
1 set of fitted on car + 1 spare set



PRINT AND FOLLOW SPECIFIC FIA INSTRUCTIONS FOR EACH CAR

- 1 aluminium seal / maximum 20mm from the studs or screw
- Aluminium seal must be correctly directed!
- 1 FIA Plate with unique number
- 1 aluminium seal
- Use ONLY FIA sealing pliers
- It must be impossible to open the sealed part





- Check **dimensions** of the restrictor: diameter + depth from the blades
- Check that restrictor is **not moving**
- Check that **wire** is fitted as per Appendix J



Turbo restrictor sizes:

WRC 2017 = 36mm

Other WRC = 33mm diam

R5 = 32mm diam

R3T = 29mm diam

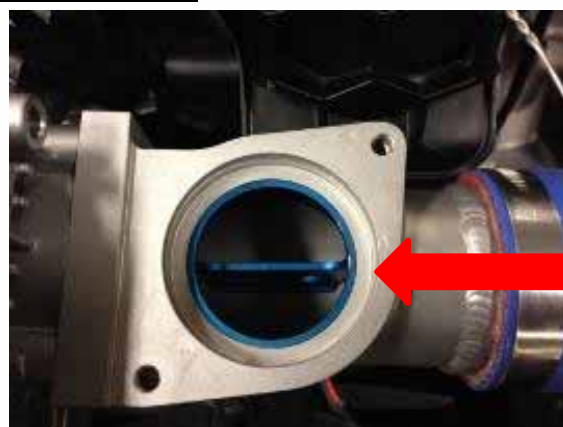
R-GT cars = specified in FIA passport

FORD Fiesta R2 (A5762/A5775) = NO restrictor

For Rally2 cars- pop-off valve:

- check that pop-off valve is homologated (see [technical list n°43](#))**
- remove from the car**
- check opening pressure (using FIA tool) & stroke**
- FIA homologated insert must be fitted**
- sealed / 2 bolts + link to intake manifold**

Non homologated Pop-Off Valve



Compulsory insert



- **Any technical or equipment issue** must be written on the each car scrutineering form
- Inform FIA Technical Staff of any problem
- Before to approve a car, link with FIA Technical Staff



- Only when a car is approved: Organizers «approved sticker» may be affixed
- «approved sticker» must be affixed on the same location for each car

Could be:

- Technical zone
- Before remote refuel
- After end of SS



- The number of spare wheels fitted in the car should be recorded
- If 2 spare wheels are fitted in the car and if the car is as close as 35 kg to its minimum weight, the second spare wheel should be removed (see Appendix J – Articles 255A, 254A , 254 , 260 and 261)
- **If underweight discovered, repeat measuring 3 times and record results, take signature to the non-conformity list**



ANY QUESTIONS ?



THANK YOU !





FEDERATION
INTERNATIONALE
DE L'AUTOMOBILE

WWW.FIA.COM